

President's Message

Dear LWML Sisters in Christ,

What catches your attention? A loud noise? A catchy tune? The LWML Mission Statement?

As Lutheran Women in Mission, we joyfully proclaim Christ, support missions, and equip women to honor God by serving others.

The LWML Primary Focus caught my attention as I serve not only as your district president, but also as a member of the LWML Group Development Committee.

Proclaiming Christ: *Declare his glory among the nations, his marvelous works among all peoples!* (Psalm 96:3).

Supporting Missions: *And he said to them, "Go into all the world and proclaim the gospel to the whole creation"* (Mark 16:15).

Equipping Women: *Now may the God of peace ... equip you with everything good that you may do his will* (Hebrews 13:20–21).

Serving Others: *As each has received a gift, use it to serve one another* (1 Peter 4:10a).

The Primary Focus is inline with the Mission Statement and then is spelled out in a practical list of "how to's" in the Strategic Plan. Check out the Strategic Plan at lwml.org. Click the About tab - then Who We Are and scroll down find the current Strategic Plan.

As a new biennium begins, think about how you and your group Proclaim Christ, Support Missions, Equip Women, and Serve Others. What are the "how to's" you will focus on? Will you *inspire* women to be in the Word? *Pray* for missions and missionaries? *Engage* and *involve* each woman in the congregation? Acknowledge and value all acts of service?

As Lutheran Women in Mission, each day we can say, *This is the day the Lord has made, let us rejoice and be glad in it* (Psalm 118:24). We can utilize LWML resources as we intentionally plan our group and zone gatherings and we can "... hold fast the concession of our hope without wavering, for he who promised is faithful. And let us consider how to stir up one another to love and good works, not neglecting to meet together, as is the habit of some, but encouraging one another, and all the more as you see the Day drawing near" (Hebrews 10:23-25).

You have been Chosen to Love and Serve as Lutheran Women in Mission. This is who we are.

Serving our Lord with you,
Cinda Poppe
LWML SWD President 2020–2026

Put on then, as God's chosen ones, holy and beloved, compassionate hearts, kindness, humility, meekness, and patience (Colossians 3:12).



From our Senior Pastoral Counselor

Whoever confesses that Jesus is the Son of God, God abides in him, and he in God. So we have come to know and to believe the love that God has for us. God is love, and whoever abides in love abides in God, and God abides in him (1 John 4:15-16).

Dear Sisters (and Brothers) in Christ,

We've just had our LWML SWD convention and so we wrapped up a wonderful biennium and are beginning a new one. Soon, your leadership will develop a brand-new theme and goals for the biennium, but it is good to remember where we have been.

Our theme for the last two years was "Abiding in Christ's LOVE," based on the verses above, 1 John 4:15-16. Our goals were threefold: to serve one another in...to study Scripture to know...and to share...Christ's LOVE.

How did you do? Did you abide in Christ's love? We studied the word *abide*. We learned that it isn't just to live in a place, but it is the idea of *rest*. It is the place where you find your home and your peace. This abidingness in Christ's love is beautiful because we see the forgiveness of sins as God is love. It is in His love that we find the giving of His Son for the salvation of the world, to lay His life down for the sake of sinners, that we might be brought into everlasting life. Did you abide in that love? Did you use His Word to find the forgiveness of sins when it was offered to you? Did you receive His Sacraments? Did you hear His Word gladly? Of course you did. You are His beloved daughters, and He has marked you as His own, calling you to where He is, and you serve Him gladly in His house. You have found rest and abide in Him. Good job!

How did we achieve our goals as the LWML SWD? Did we serve one another in Christ's love? You collected your mites, gave your gifts from the heart, and helped those who were hurting, prayed for those who had need of them, sacrificed for those who had nothing, and supported those who stumbled. We did these in our personal lives to be sure, but we did this throughout all our activities. Didn't you see this in your Fall Retreats and Winter Getaways? Didn't you see this through your

leadership development? Didn't you see this in your local LWMLs in how they served by sewing, knitting, quilting, collecting, donating, evangelizing, and more?

Did we study Scripture to know Christ's love? I believe that goal was also met. It's not enough to start and end a meeting, or all of them, with a quick study of the Word and with prayer, but we incorporated God's Word throughout all we did. Each event in the LWML SWD was derived from a theme taken from the Word of God, and that theme guided our work. Every time we were together, you were eager to hear what God had to say, not what He was saying to your hearts, but what He had said to you in His Word, through His Spirit, as He pointed you to His Son.

Did we share Christ's love? Of course. We are (well, you are, and I'm with you) Lutheran women in mission! That's our purpose; that's our goal. We share Christ's love with all. Sometimes, it's through pure evangelism. Sometimes, it's through acts of service. Sometimes, it's through prayer. Sometimes, it's through kindness. The love of Christ flows through you.

None of this is to say that we did this all perfectly. We're sinners; we messed things up, but for the grace of God, He blessed us through these last two years and used the work of our hands, the willingness of our feet, the beauty of our voices, the joy on our lips, the riches of our treasure, the obedience of our will, and every fiber of our being to accomplish His purposes despite us. God be praised! He gave us rest when we would otherwise expect to work. You abide in Him and He in you. He has given you Himself that you might have forgiveness, life, and salvation in His name and be counted worthy to share in His mission to the world.

Be excited about whatever He brings you over the next two years. It's going to be a ride!

Always in Christ,
Pastor Polzin - Sr Pastoral Counselor

See the last page of this issue for a special prayer shared by Pastor Polzin!



How is Your Loving and Serving Going?

God blessed us with a wonderful day, the location of Bethlehem Lutheran Church in Sun Prairie, and 300 sisters in Christ and pastors to accomplish the work He chose us to do.

Thank you so much to the convention committee: Jan Schadt, Joan Anderson, Carol Smith, Ann Nehring, Kathleen Sumrall, Anneliese Kroll, Donna Weiss, Diane Meyer, Susan Kemnitz, Elaine Hull, Connie Meyers, Linda Jacobson and Ellen Peck. Each of you had special talents and joyful hearts in serving our Lord in preparation of this event. We are also very grateful for the encouragement and expertise from President Cinda Poppe, Sr. Pastoral Counselor Rev. Matthew Gehrke, Treasurer Patty Silah, Audio/Visual ladies Kim Hovie and Joanna Jaloszynski, Music Coordinator Roberta Hilgendorf, and organist Abigail Grosnick. What an opportunity to love and serve with you all.

The final convention contributions are as follows: Offering was \$4,844, with \$3,633 distributed to the Sheboygan County Hispanic Outreach and \$1,211 for the Female Church Work Scholarship Fund, Mite Box donations of \$535.73 and Mission Walk pledges of \$2,874. Wow, how we can spread love and serve God with this!

Our Gifts from the Heart response was once again, an abundance of love and service by providing 150 bags filled with encouragement to students at UW LaCrosse, UW Madison and UW Platteville. The great overflow of items was provided to Concordia University Wisconsin and UW Milwaukee students.

Elections of Officers welcomed to the Executive Committee included: Judy Gitzlaff, VP of Special Focus Ministries and Mission Grants; Kay Nett, VP of Communication; Barb Kaun, Corresponding Secretary; Janis Mattison, Treasurer; and Rev. Jesse Davis, Jr. Pastoral Counselor. Cinda Poppe remains as President, and Rev. Lewis Polzin is now our Sr. Pastoral Counselor. How exciting to love and serve through the LWML SWD with these individuals in the new biennium.

Our 2024–2026 mite goal was set at \$220,000 with \$165,000 for SWD mission grants and \$55,000 for LWML mission grants. With the designation of a mite overage from the 2022–2024 biennium of \$16,548.28 to SWD, we were able to choose \$181,548.28 in grants!

The Mission Grants chosen were: Orphan Grain Train Wisconsin Branch for \$15,000; LCFS Child Therapy Expansion (Mental Health Counseling) for \$25,000; SWD Church Worker Grant for \$30,000; Lutheran Church Charities Comfort Dogs WI for \$21,000; Teaching God's Children with Special Needs (Journey School Milwaukee) for \$50,000; Trinity Evangelical Lutheran Milwaukee Restoration for \$25,000; Fort Wayne Seminary Food Co-op for \$15,000; and Camp LuWiSoMo Camper Scholarships with a partial grant of \$548.28.

These grants are great opportunities to spread God's message of love and salvation to a hurting world. Ladies, we have been chosen, so let's get to work. *Put on then, as God's chosen ones, holy and beloved, compassionate hearts, kindness, humility, meekness, and patience* (Colossians 3:12). While we're working, let's encourage our sisters in Christ to join us!

Melody Rodger
2024 LWML SWD Convention Chairman



Keynote Speaker, Carolyn Blum
"You want ME to do WHAT?"



LWML SWD President, Cinda Poppe
LWML VP of Gospel Outreach, Karen Morrison



Young Women Representatives



SWD LCMS
Mission Executive,
Rev. Dr. Nathan Meador



2024-2026 LWML SWD Officers
Front L-R Melody Rodger - Judy Gitzlaff - Janis Mattson
Back L-R Pastor Polzin - Wendie Staus - Marilyn Belter - Cinda Poppe - Kay Nett - Joan Anderson - Barbara Kaun
Not pictured Pastor Davis



Among Sisters in Christ, singing "Lift High the Cross"

LWML SWD 40th Biennial Convention June 14-15, 2024



LWML SWD Past Presidents



Servant Events
Gifts from the
Heart
Writing Greeting Card



Servant Events
Gifts from the Heart
Collecting and packaging
bags for UW Ministries
LaCrosse, Madison and
Platteville



Special Focus Ministries and Mission Grants Changeover

I would like to introduce myself as the new VP of Special Focus Ministries & Mission Grants. My name is Judy Gitzlaff, and I live in Wales, which is in Zone 17, where I am also the Zone President. I am active in my local group as well as in my church, Bethlehem Lutheran, Wales. On the district level, I was most recently the Female Church Work Scholarship Chairperson. Along with my new position as VP of Special Focus Ministries & Mission Grants, I am also on the 2026 District Convention Committee. As you can see, I wear many hats!

I had the pleasure of presenting the first mission grant check of \$15,000 to Orphan Grain Train-Wisconsin Branch just 10 days after the convention, due to the more than \$16,000 overage from the previous biennium! My husband and two other LWML members came along. We were given a tour of the Westfield facility, where we were truly amazed at all the donations! These humanitarian supply donations are sorted, boxed and labeled, then sent nationally or internationally wherever they are needed. Our mission grant check will be used for shipping containers overseas. Each overseas shipping container will cost between \$6,000-\$12,000. This branch is on record for shipping at least 12 containers per year!

Pictured are:

Judy Gitzlaff (left)
and Theresa Rake
who is the
Warehouse Packing
Station Manager at
Westfield



My position oversees: Heart to Heart Sisters of All Nations, Missionary Outreach & Mission Education, Special Focus Ministries, Special Ministries Advocate, and the Mission Grants Committee. I look forward to working with my fellow SWD Lutheran Women in Mission as we all work together to further His kingdom with our time, talents and tithes.

To God be the Glory, Great things
He has done!

Judy Gitzlaff VP of Special Focus
Ministries & Mission Grants
vpspecialfocusministries@lwml-swd.org

SWD Bookstore News

The LWML has items for sale! You can order items on your own through their website <https://lwml.cph.org/> or I will be taking orders for the LWML Bookstore for you to pick up at the LWML SWD Fall Retreat on September 27 and 28 in Fond du Lac.

If you would like to place an order with me, let me know by September 14 by emailing me at dkamrath22@gmail.com. Remember you will pay only \$1 shipping per item if you pre-order with me. We keep inventory in the bookstore low, so I suggest you do a pre-order if you want something special.

Let me know if you have any questions or if I can help you in any way!

Serving the Lord with Gladness,

Diane Kamrath
SWD Bookstore Manager



News from the Chair of the Nominating Committee

In an unexpected twist of events, we were set to elect a new president at the convention in June; however, as the nominating committee received no names either for the ballot or from the floor, the election did not happen. To explain what this means, according to our LWML SWD Bylaws Article XX — Parliamentary Authority: “If, for any reason, the assembly does not complete an election at the time for which it was scheduled...the term of office extends until a successor is elected. Failure to complete an election leaves the incumbent, if any, in office.”

Therefore, Cinda Poppe, our incumbent president, will remain as LWML SWD President for the next two years! We are truly grateful and blessed to have had Cinda for the past four years as our president, and now for two more years. Please continue to pray for Cinda and all our leaders of the LWML and for women and pastors willing to serve in leadership positions.

Marilyn Belter
Nominating Committee Chairman

More about Grant #2



Lutheran Counseling and Family Services of WI (RSO) Child Therapy Expansion - Mental Health Coverage - \$25,000

With the counseling skills of the staff at LCFS and a vision of expansion to serve more youth, the goal is to expand the Child Outreach Therapy program that reaches children and their support networks and brings them to a better place in life through the message of the Gospel.

LWML SWD Service Opportunities!!

Thank you to everyone who filled out a Personnel Profile in June! Having a new bank of profiles is extremely helpful in identifying people to fill positions for our district. The Personnel Profile is located lwml-swd.org. Click Resources then District Helps and it's the fourth item down. It is never too late to turn one in!

Current Positions to fill:

- Mission Grant Chairman
- Renewal Committee Chairman
- Special Funds
- Special Focus Ministries
- Fall Retreat 2025 Co-Chair
- Archivist/Historian
- H2H Sisters of All Nations Chairman
- Christian Growth
- Parliamentarian
- *Anniversary Committee

Committee members needed: Fall Retreat, Winter Getaway, Leader Development, Renewal, Young Women, Heart to Heart – Sisters of All Nations, Christian Life, Music, Mission Grants, Missionary Outreach and Mission Education, Special Focus Ministries, and Special Ministries.

The chairmen of these committees are looking to welcome new members! Are you interested in being a committee member? Fill out the Personnel Profile form found at lwml-swd.org and email accordingly!

Blessings of service: fellowship with LWML sisters, staying in the Word, and using your time and talents for the Lord.

(Note: Most committee meetings are “zoom” type meetings, saving travel time and expense!)

Female Church Work Scholarships Awarded for 2024-2025

These grants are funded by the individual members of the LWML SWD through a percentage of Fall Retreat and Winter Getaway offerings, special gifts and interest on our funds. To be eligible, a woman must be a resident of South Wisconsin District and enrolled in one of our synodical institutions preparing for full time church work in a called position. Please pray for these young women as they continue their education toward full-time church work.

In no particular order, here are the recipients:



Marissa Boris

Marissa will be a junior this year at Concordia University, St Paul and majoring in elementary education. She has been very active in both church and college activities. She is looking forward to working with youth and hopes to help start a genuine revival in seeking the kingdom. Marissa remembers being excited to fill her Mite box with as many coins as she could find!

Abigail Grosnick

Abigail will be a 5th year senior this year at Concordia University Wisconsin and is majoring in the Deaconess program at seminary. She has been playing the organ for 8 years and will continue to use her music background as another facet of her church work. She has been active in LWML during high school and college and was the SWD Young Woman Rep at the 2023 LWML convention in Milwaukee.



Allison O'Farrell

Allison will be a senior this year at Concordia University Wisconsin and is majoring in elementary and special education. She says from her work as a camp counselor she has to be ready for the unpredictable. Allison was raised in a tougher home environment and also faced learning challenges because of an eye disability. She has recently been a women's ministry leader at college which has allowed her to grow in the skill of sharing her faith with others.

Peyton Roethel

Peyton will be a freshman this year at Concordia University Wisconsin and is majoring in early childhood and special education. She has been active in her church with teaching positions thru her high school years. Peyton has also been involved in sports year round as well as band. She was a counselor at a camp for disabled people and feels that experience was life changing for her and wants to make this her life's work.



Nina Seeger

Nina will be a sophomore this year at Concordia University Wisconsin and is majoring in Director of Church Ministries/social work and is interested in attending seminary for deaconess certification. She is interested in youth ministry and in working in a youth group home. Nina has organized several mission trips in different areas of the country where they helped with VBS and various community projects.

(Recipients continued on page 8)

Hailey Whittow

Hailey will be a freshman this year at Concordia University Wisconsin and is majoring in secondary education. Her experience at Lake Country Lutheran has cemented her desire to be a Lutheran high school teacher. Hailey has been active in VBS for many years-both at her home church and on a mission trip to Mexico. She has been active in sports, music and theater during her high school years and feels those experiences have improved her teaching abilities.



Lauren Humphrey

Lauren will be a junior this year at Concordia University Wisconsin and is majoring in Director of Church Ministries/pre deaconess. She has been active in campus ministry in leadership roles during her college career and has also planned a mission trip to Appalachia for 27 college students. Lauren's deep love for theology has led her to continuing her education at seminary in the future.

Lilly Niermann

Lilly will be a freshman this year at Concordia University Wisconsin and is majoring in elementary education. Her dream focuses on leading others in their faith and education. Lilly feels she has been blessed with leadership abilities in different areas of her life including leading the hand bell choir and on the soccer field. She feels these abilities will help her in the future as a Lutheran elementary teacher and in her faith walk.

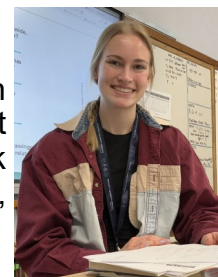


Ruth Eatherton

Ruth will be a junior this year at Concordia University, Chicago and is majoring in elementary education. While most of her school life was spent attending Lutheran schools, for the first two years of high school, she attended a public school which gave her the opportunity to witness in a largely non-Christian setting. Ruth has been involved with music for many years and looks forward to sharing that gift with her students.

Amanda Steinke

Amanda will be a senior this year at Concordia, Nebraska and is majoring in elementary education. She has been active in sports, youth activities and student government both in high school and college. Amanda's faith has led her to talk about her love of Christ to others every day. This, in addition to her love of teaching, leads her to her future in Lutheran school teaching.



Madysen Gonzagowski

Madysen will be a freshman this year at Concordia University Wisconsin and is majoring in elementary education. She has been active in church activities through high school and has participated in a mission trip as a junior. Madysen has been told through the years that she would make a good teacher. She developed a close relationship with her church's DCE intern which has furthered her faith walk.

Kasie Badtke

Kasie will be a junior this year at Concordia University Wisconsin and is majoring in elementary education. She has been a Sunday School and VBS teacher of younger children both in high school and college. Kasie feels her faith has grown due to an accident she had last year and a current family situation. She knows that God guides her and wants the best for her. Kasie is focused on guiding others and sharing the love of Jesus with her future students.





Leadership Development

The Leadership Development Committee for 2025 is underway. We had our first meeting in July and plans are quickly taking shape. We are working to identify potential locations and dates for March 2025. Watch for more information to follow! We are still looking for members to be a part of our team, so if interested, contact Jill Jones at jj.richwood.east@hotmail.com.

We also want to continue to encourage you to make use of the resources available on the LWML website (lwml.org) to help develop leaders and grow your LWML groups!

The very best method to encourage women to join Lutheran Women in Mission is to personally care about each woman in the congregation as Jesus cares for her. Get to know her, be interested in her, share with her, be enthusiastic about LWML, and encourage her to become involved in some aspect of Lutheran Women in Mission with you. Your positive words and attitudes about LWML help to energize others! Some ideas to energize membership include:

- New Brides — Have a recipe shower at a meeting. Visit the new bride and give her the recipes and an encouraging Bible verse for the new bride.
- Present new moms with *Dear Mother: Devotions for New Mothers*. Here is a link for this devotion - <https://lwml.cph.org/p-31880-dear-mother-devotions-for-new-mothers>

Jill Jones
Leadership Development Committee Chairman

LWML Gifts of Love Ministry

Are you in need of updating or making changes to your estate plan? Did you know your LWML Gift Planning Counselor can help you clarify your thoughts **before** contacting your attorney. They have resources to help educate and assist you with explanations and help you get ready to work with your attorney and pray with you along the way. They can help you organize your plan to avoid unnecessary time incurring higher expenses from your attorney. Your LWML Gift Planning Counselor is there to help you, free of charge!

Contact Carol von Soosten at
Carol.vonSoosten@lfnd.org
Pat Menden - Special Funds Coordinator

Calling all Crafters!

Do you have ideas for a 2025 LWML Convention identifier for the women and men of the South Wisconsin District to wear at the convention in Omaha, Nebraska? It should be something easily worn, identify us being from South Wisconsin and reasonably cost effective to produce. Here is what we have recently used in the past.



We are also looking for ideas and banner makers for the 2025 LWML SWD banner that will be taken and displayed at the 2025 LWML Convention in Omaha, Nebraska. The theme for the 41st Biennial Convention is "Growing in God's Grace," based on this Bible verse *But grow in the grace and knowledge of our Lord and Savior Jesus Christ. To him be the glory both now and to the day of eternity. Amen* (2 Peter 3:18). Please submit your ideas both for identifiers and banners plus the names of potential banner makers to vporganizationalresources@lwml-swd.org by August 20, 2024.

Marilyn Belter
VP Organizational Resources

Serve the LORD with gladness!

STAY TUNED for the reveal of the 2024-2026 Theme, scripture verse and goals coming soon!



News from our Publicity Chair

As we are enjoying the long summer days, it's hard to believe that in a few months we will be gathering together for the SWD Fall Retreat in Fond du Lac, as well as for our fall rallies.

As you gather with your family and friends for summer fun, please share with them about what's going on within your local LWML group/society, your zone, and our SWD. There are lots of opportunities to invite the sisters in our lives that may not be aware of what is all going on in LWML.

Our Facebook page and website are great resources for events of the LWML SWD and a great place to visit regularly. Please help us get the word out by sharing posts as you visit the LWML South Wisconsin District on Facebook. I encourage you to send your PR posters to me for posting on our Facebook page.

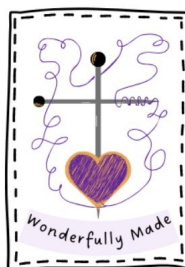
The Fall Rally Dates for all zones will be available soon on our website, lwml-swd.org under Resources then Zones.

If you would like to join the Public Relations Committee, please contact me! I'd love to chat! I look forward to seeing you at the SWD Fall Retreat on September 27 & 28 in Fond du Lac!! Make sure to come by the Public Relations Exhibit table and say "Hi!"

Jen Schneider
Public Relations Chairman
publicrelations@lwml-swd.org

Save the date for Winter Getaway 2025

The LWML SWD Winter Getaway will be held on January 31 & February 1, 2025. Plan now to join us at the Wintergreen Hotel & Conference Center in Wisconsin Dells! Rev. Michael Salemink, Executive Director of Lutherans for Life, will be our guest speaker. The theme for the event is "Wonderfully Made" based



on the verse, *For you formed my inward parts; you knitted me together in my mother's womb. I praise you, for I am fearfully and wonderfully made. Wonderful are your works* (Psalm 139:13-14a). Please keep checking lwml-swd.org where more details will be posted as they become available.

SWD YOUNG WOMEN REPS

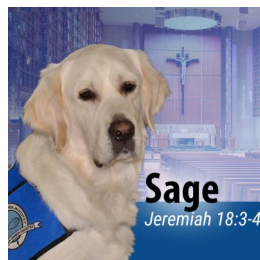
Serving the Lord with gladness — women of all ages! What a joy it is! Women of the LWML SWD had the privilege to welcome four Young Women Representatives to our June convention. Undoubtedly these women were encouraged and brought along by some of you — thank you! We know it makes a huge difference to anyone looking to get involved in something new to be encouraged and guided by a caring person. Please consider the opportunity you have to introduce a young woman to the LWML and its mission to proclaim Christ, support missions, equip women and serve others! You know the joy and empowerment that involvement has brought you, let's pass it on!

We are already looking ahead to the LWML Convention in Omaha in 2025! Applications are currently being accepted to represent our district as YWRs in Omaha. More information and the application can be found at lwml-swd.org. Any questions? Email Carmen at ywchairman@lwml-swd.org.

Carmen Schallock
SWD Young Women's Committee Chairman

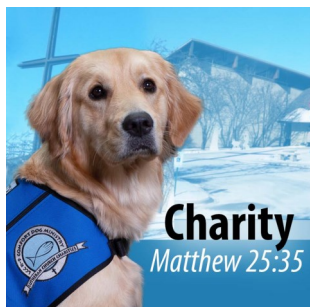
Meet the Comfort Dogs of Grant #4

Launched in August 2008, the Lutheran Church Charities K-9 Comfort Dog Ministry is a national human-care ministry embracing the unique, calming nature and skills of purebred Golden Retrievers. The LCC K-9 Comfort Dogs are a bridge for compassionate ministry, opening doors for conversation about faith and creating opportunities to share the mercy, compassion, presence and proclamation of Jesus Christ. Please meet the dogs that will benefit from this grant as of this article:

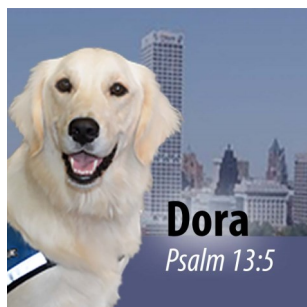


Each entity that sponsors a Comfort Dog is responsible for raising funds to support its dog, especially in the case of a deployment. With the grant of \$21,000, each dog will receive \$3,000. If you want to learn

more about the work they do, please visit <https://lutheranchurchcharities.org/meetthedogs-165459>.



Brookfield Lutheran
Brookfield, WI



Lutheran High School Assoc
West Allis, WI



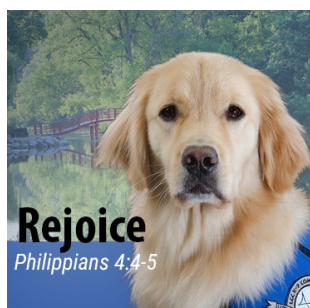
Faith Lutheran Church
Appleton, WI



Shepherd of the Hills Lutheran
Greenville, WI



Both dogs are serving at St Paul's Lutheran Church
Janesville, WI



“Figuring It All Out”

Does your summer seem to be flying by at a high rate of speed this year? Mine sure does, and I consider the start of this season as the meteorological start of summer on June 1! We have had graduations, CONVENTION, two weeks of grand parenting the pooches, digging weeds, and childcare for the summer — you name it! You can fill in the blanks for your own life!

Don't forget to leave time for God — everyday! He is the most important contact for all of us! With that in mind, turn your attention to the upcoming devotion for August from LWML. The title, “Figuring It All Out”, leads us to consider these words, *For I know the plans I have for you, declares the LORD, plans for welfare and not for evil, to give you a future and a hope* (Jeremiah 29:11).

The author starts us thinking right away when she mentions that we are always in a “start” position — after something else has ended. We try to figure out our future but really don't know what it will be. Do you have trouble making big decisions? God has not left you without help. God has a plan for each one of us, and He is always with us and will guide us in our decisions. Rely on Him ... He has it all planned out for you!

Sandy Krainz
Christian Life Chair





Update on Mission Grants

2023–2025 Mission Grant 2 - HEALTHY TOGETHER: HEALTHY WORKERS - HEALTHY CHURCH | Lutheran Family Services US - \$106,000 **PAID IN FULL!**

God directs the church to care for those He calls to serve in ministry. Church workers and their families regularly face unprecedented stress, challenges, and suffering which affects their physical, psychological, emotional, and spiritual well-being. There is an urgent need for the church to support and care for church workers. Lutheran Family Services is responding to the need and this grant will help increase their ministry team of masters-level, licensed therapists who will provide marriage and family counseling that is Christ-centered.



Lutheran Women in Mission 2023–2025 MISSION GRANTS

1. **Orphan Grain Train Servant Center**
Orphan Grain Train, U.S.\$100,000
2. **A Healing Space for At-Risk Children**
Dakota Boys and Girls Ranch, ND\$100,000
3. **Serving God's Children with Special Needs**
Journeys Lutheran School, Milwaukee, WI.....\$100,000
4. **Fortifying Faith in Those with Vision Impairment**
Lutheran Braille Workers.....\$100,000
5. **Disaster Response Team**
Trinity Lutheran Church, Tyler, TX.....\$50,000
6. **Mobile Kitchen**
Forged by Fire Services, Gulf Coast Region, U.S.\$85,000
7. **Upheld by God's Hand, Mental Health Outreach**
LCMS Life Ministry\$96,500
8. **Expanding Gospel Proclamation Worldwide**
Concordia Seminary, St. Louis, MO\$100,000
9. **Equipping Young Leaders — LCMS Youth Ministry**\$50,000
10. **Set Apart To Serve — LCMS Office of Pastoral Education**.....\$100,000
11. **Lutheran Women in Mission Finish the Job**
Ministry in Mission, Haiti\$85,000
12. **Sharing Christ Crucified with High School Youth**
Lutheran High School of Greater New Orleans, LA\$35,000
13. **Water and the Word**
Evangelical Lutheran Church in Kenya\$80,000
14. **Enhancement of Deaf Ministry and Outreach**
Ephphatha Lutheran Mission Society, U.S.\$47,000
15. **Feeding Haitian Children Through Gospel and Meals**
Trinity HOPE.....\$58,082
16. **Care for Street Children of Western Kenya**
Capstone Ministries\$50,000
17. **Nurturing Faith for the Aging**
Lutheran Ministries Media (Worship Anew)\$100,000
18. **Zoe's Home Support**
Zoe's Home, Trinity Lutheran Church, Clinton, MO.....\$75,000
19. **Tanzania Children's Homes**
Evangelical Lutheran Church of Tanzania, Africa\$74,500
20. **Sharing Christ with Women and Children in Kazakhstan**
Lutheran Hour Ministries\$100,000
21. **Healthy Together: Healthy Workers, Healthy Church**
Lutheran Family Services, U.S.\$106,000
22. **Expanding Gospel Outreach to Hispanics in the U.S.**
Lutheran Hour Ministries\$100,000
23. **A Legacy of Love for Special Needs Children**
Lutheran Special Education Ministries, U.S.\$100,000
24. **God's Word for Central and South American Missions**
Lutheran Heritage Foundation.....\$100,000
25. **Bringing God's Word to India**
India Bible Translation Project\$100,000
26. **Life Connection Events and Kits — Lutherans for Life**.....\$70,000
27. **Siouxland Lutheran Hispanic Ministry**
Hope Lutheran, South Sioux City, NE.....\$50,000
28. **Growing Our Place: Care for Special Needs Students**
Our Place After School Care, Inc., NE\$20,000
29. **Repairs for St. Paul's Lutheran School**
St. Paul's Lutheran School, Cullman, AL\$50,000
30. **Showering Love on the Least of These**
Mercy Holistic Ministry, CA\$100,000
31. **Breaking Generational Poverty in Detroit**
Camp Restore Detroit, MI\$58,988



LWML SWD Fall Retreat
September 27-28, 2024
Radisson Hotel & Conference Center
625 West Rolling Meadow Drive
Fond du Lac, WI 54937

The LORD has chosen you to be a people for his treasured possession (Deuteronomy 14:2).

TREASURED

Retreat Program written by Deb Burma

What could be more precious than diamonds? **YOU!**

We are the precious, treasured possession of our heavenly Father, who sought us and claimed us as His own in Christ! From coal to diamonds, we are continuously being transformed in Christ, reflecting His glory and light to a dark world. Join us for a bedazzling Women's Retreat Getaway! We will walk in the light of God's Word together, enjoy fabulous food and tasty treats, and lift our voices in praise, all as we share encouragement, fellowship, and fun in Christ, the light of the world!

Presenters to include:

- **Sr. Pastoral Counselor- Pastor Polzin**
- **Cinda Poppe** ● **Michelle Prince**

Gifts from the Heart Recipients:

Hope LC Food Pantry

- Cereal
- hamburger helper
- Rice-a-roni
- canned spaghetti and ravioli
- canned meat

Charis Pregnancy Counseling

- Pacifiers
- Infant socks
- Bibs
- Diaper rash ointment
- Clothing size 6 months to 2T
 - 2-piece, Onesies, Dresses

Main Servant Event:

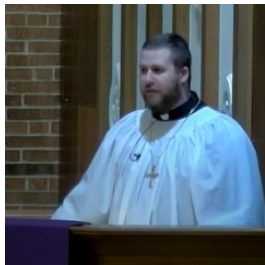
Lap blankets for Lutheran Home Residents in Liturgical colors

Offering Recipient:

75% Journey's Lutheran School/ 25% Female Church Work Scholarship

Watch for more information to come at: www.lwml-swd.org

More on the Five Mission Grants not already featured in this *Mission Lamp*!

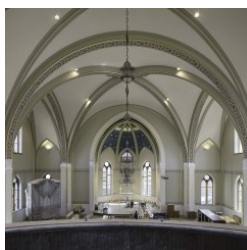


#3 - SWD Church Worker Student Scholarships \$30,000

The South Wisconsin District office allocates scholarships to students enrolled in a Concordia University and intending to serve the church as a pastor, teacher, deaconess, etc. Over the next two years this money will be distributed to those who apply and qualify.

#5 - Teaching God's Children with Special Needs: Journey School \$50,000

Journeys Lutheran School (formerly Lutheran Special School) continues to embrace students in grades 3-12 with special needs. Their programs facilitate the educational goals of individualized instruction and growth along with the sharing of the Gospel. This request is toward the purchase of two passenger vans which will be used to transport students to field trips and other opportunities supplementing what they currently do as well as use in the school to work program.

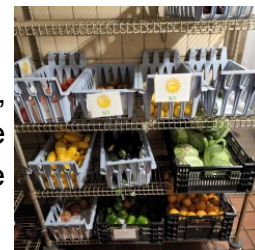


#6 - Trinity Evangelical Lutheran Milwaukee Restoration \$25,000

In 2018, historic Trinity Lutheran Church in Milwaukee was extensively damaged by a fire. Insurance covered 67% needed for reconstruction. Further funds are needed to re-furnish the sanctuary so that the presence of Trinity stays strong in the downtown area.

#7 - Concordia Theological Seminary Fort Wayne, IN - Food Co-op \$15,000

The Food and Clothing Co-op at Concordia Theological Seminary, Fort Wayne, works to encourage and financially support students through its programs. The request for \$15,000 is specifically to purchase perishable food items for the 2024-2026 biennium.



#8 - Camp LuWiSoMo Camper Scholarships - Partial Funding \$548.28

Camp LuWiSoMo in Wild Rose, Wisconsin works with families that cannot afford the full cost of camp for their children. This Scholarship Fund has been a vital part of assisting them to make it possible to pay the fee so that many children who otherwise would not be able to attend camp are able to do so. (RSO)

The information on this page also appears on the website - lwml-swd.org

Serve the LORD with gladness!

Partnering in Missions!

God's blessings to you all this summer! Hopefully many of you attended the LWML SWD 2024 Convention in June. If so, you came home inspired and renewed to continue showing God's love to everyone!

We were again very blessed with the outpouring of contributions at the convention. The final total of contributions was \$8,253.73, and the breakdown is as follows: The convention offering was \$4,844, mite contributions totaled \$535.73, and the mission walk pledge proceeds were \$2,874. From the collection offering, the Sheboygan County Hispanic Outreach will be given \$3,633, and the remaining \$1,211 will go to the Female Church Work Scholarship Fund.

As of June 30, 2024, we are working toward paying mission grant #2 for LCFS (Lutheran Counseling and Family Services of Wisconsin) in the amount of \$25,000. The balance needed to fund this grant is \$8,452.70. Thank you, local groups, for your generous contributions this summer!

I would like to remind our local groups and zone treasurers to discard all the old tear-off receipt vouchers and use our updated vouchers, which have been available for several years. You may find them on our website, lwml-swd.org, under the 'resource' tab, 'society helps' tab, and then scrolling down to 'receipt voucher' and printing. If you do not have computer access, please contact me, and I will gladly mail vouchers to you. Thank you for your help!

Wendie Staus
LWML SWD Financial Secretary
financialsecretary@lwml-swd.org



2024-2026 Mission Grants

These are the 2024-2026 Mission Grants:

- Orphan Grain Train - Wisconsin Branch
Paid in FULL! \$15,000
- Lutheran Counseling and Family Services of WI
Child Therapy Expansion - Mental Health
Coverage \$25,000
- SWD Church Worker Grants \$30,000
- LCC Comfort Dogs of WI \$21,000
- Teaching God's Children with Special Needs -
Journey School \$50,000
- Trinity Evangelical Lutheran Church MKE -
Restoration \$25,000
- Financial Assistance for CTS, Fort
Wayne Food & Clothing Co-op \$15,000
- Camp LuWiSoMo Camper Scholarships
Partially funded \$548.28

Total: \$181,548.28

The mission grant amount voted on at convention was \$220,000 with \$165,000 for SWD grants and \$55,000 for LWML grants. The excess from the 2022-2024 biennium of \$16,548.28 was added to that amount per the majority vote of the delegates for a final total for SWD mission grants of \$181,548.28. After delegate voting, the first 7 grants above will be fully funded and the 8th one will be partially funded, as noted.

Please see the website lwml-swd.org for more Mission Grant information. Look under Resources, District then Grants. If complete information for the new biennium isn't available when you first look - please check back as it will be posted as soon as possible.



2024 Events to Remember

August 10 Biennium Planning Mtg - Peace LC
9 am - 4 pm Beaver Dam

August 24 EC Mtg - Good Shepherd LC
9am - 4 pm Watertown

August 24 BOD Reports due to Corr Sec



Sept 14 BOD Meeting - Pella LC Waupun
9 am - 4 pm

Sept 27-28 Fall Retreat - Theme TREASURED
Radisson Hotel & Conf Center
Fond du Lac - More information on
page 13 of this issue and on the
website

Oct 15 *Mission Lamp* articles due

Nov 2 Zone President's Training
9 am - 4 pm Bethlehem LC - Wales

Executive Committee

President Cinda Poppe

president@lwml-swd.org

VP of Organizational Resources Marilyn Belter

vporganizationalresources@lwml-swd.org

VP of Gospel Outreach and Christian Growth
Joan Anderson

vpgospeloutreach@lwml-swd.org

VP of Special Focus Ministries and Mission Grants
Judy Gitzlaff

vpspecialfocusministries@lwml-swd.org

VP of Communication Kay Nett

vpcommunication@lwml-swd.org

Recording Secretary Melody Rodgers

recordingsecretary@lwml-swd.org

Corresponding Secretary Barbara Kaun

correspondingsecretary@lwml-swd.org

Financial Secretary Wendie Staus

financialsecretary@lwml-swd.org

Treasurer Janis Mattson

treasurer@lwml-swd.org

Sr Pastoral Counselor Rev. Lewis Polzin

srpastoralcounselor@lwml-swd.org

Jr Pastoral Counselor Rev. Jesse Lee Davis

jrpastoralcounselor@lwml-swd.org

Let us pray: Holy and Gracious Father, we give you thanks for giving us rest in your Son. As we look to the work of this life, keep us mindful that you bless the work you have called us to do through the sanctifying power of your Holy Spirit, that in Jesus Christ, we may have rest for all eternity in the life which is to come. Grant us grace to serve you by serving others to bring Christ to the lost and erring, and to remind each other of Christ's love that abides in us now and forever. In Jesus' name, amen.

Prayed over us by Pastor Polzin!



Vaunie Weaver, *Mission Lamp* editor

Wendie Staus, assistant editor