

**Lutheran Women's Missionary League  
South Wisconsin District**

**37<sup>th</sup> Biennial Convention  
June 22 & 23, 2018**

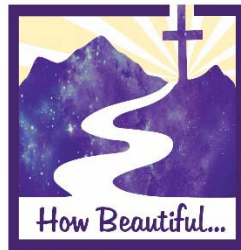


**Isaiah 52:7**

**Milwaukee Marriott West  
W231N1600 Corporate Ct.  
Waukesha, WI 53186**

**South Wisconsin District  
Lutheran Women's Missionary League  
June 22 & 23, 2018  
Milwaukee Marriott West**

- Purpose:** Conduct the official business of the LWML SWD in a timely and God pleasing manner allowing for a smooth transition moving into the coming biennium.
- Goals:** Through the power of the holy Spirit, using God's Word, we will be equipped to use our gifts to be witnesses of God's love to all people.
- Objective:** Grow in faith by offering opportunities to meet and hear from those active in missions at home and abroad. Share God-given talents by being the hands and feet of Him who gave us being.
- Theme Text:** *How beautiful on the mountains are the feet of those who bring good news, who proclaim peace, who bring good tidings, who proclaim salvation, who say to Zion, "Your God reigns!" Is 52:7 NIV*



**Isaiah 52:7**

**The Convention Logo**

**Purple Celestial Mountains**

Represent the vast areas of the world where the Word of God has been spread; but, more importantly, where the WORD needs to be heard.

**Path**

Represents the blessed journey of the feet that travel to do God's work—by both missionaries in a far field and those in the home fields.

**Cross**

Represents the sacrifice paid by our Lord, bringing salvation to the world.

**Rays of Sonlight**

Represent the majesty of our Lord!

- Feet:** The vehicle for spreading God's Word to all the world;
- Mountains:** places to which not everyone can travel
- The LWML** sends them through our mites and prayers.
- But:** there are places to which our feet can travel for God's work...our homes, churches and Communities, wherever the path of God leads us.
- This is not** just the work of those missionaries we send.
- We are all** commissioned to "say to Zion, Your God Reigns!"

## Table of Contents

	Page
Ingathering Litany .....	5
Agenda .....	6-7
By-Law Changes .....	12-16
Mission Grant Proposals .....	17-31
Mission Grant Tally Sheet .....	32
Candidates for Office .....	33-39
Candidates for Office Tally Sheet .....	40
Song Lyrics .....	73-78
LWML Pledge/Purpose/Objectives .....	80

## 2018 LWML SWD Convention

### Ingathering Litany

L – O Lord, C – **have mercy**

L – O Christ, C – **have mercy**

L – O Lord, C – **have mercy**

L – O Christ, C – **hear us, O Lord**

L – We ask You to bless these items given this day for the in-gathering.

C – **We implore You to hear us, Good Lord**

L – We pray for the CHALO! people at Brookfield Lutheran Church  
and BLC VBS, and that these items will bless their ministry.

C – **We implore You to hear us, Good Lord**

L – We pray for peace, comfort from the Holy Spirit and Your protection in  
every time of need.

C – **We implore you to hear us, Good Lord**

L – Lord Jesus Christ, Son of God

C – **We implore You to hear us, Good Lord**

L – O Christ, C – **have mercy**

L – O Lord, C – **have mercy**

L – O Christ, C – **have mercy. Amen**

**LUTHERAN WOMEN'S MISSIONARY LEAGUE  
SOUTH WISCONSIN DISTRICT 37<sup>TH</sup> BIENNIAL CONVENTION  
JUNE 23, 2018  
AGENDA**

- **8:05 a.m. PROCESSION LINE-UP & PRE-CONVENTION MUSIC**
- **8:15 a.m. PROCESSION** (Please stand)

**Call to Order:** LWML SWD President, Barb Kaun

**Opening Prayer:** Rev. Dale Blanchard

**Pledge of Allegiance:** YWRs & Heart to Heart Sisters (Please stand)

**LWML Pledge:** LWML SWD Past District Presidents (Remain standing)

**Introductions:** LWML SWD President, Barb Kaun

**Convention Rules:** Corresponding Secretary, Claudia Fairfield

**Adoption of Convention Agenda**

**Special Guests:** LCMS SWD President, John Wille

LWML VP of Christian Life, Jennifer Huecker

**Announcement of mission grants funded 2016-2018 - VP of SFM & Mission Grants, Kristen Kolell**

**Vote for excess mites:** VP of SFM & Mission Grants, Kristen Kolell

**REPORT OF FRIDAY EVENING WORSHIP SERVICE OFFERING:** Diane Kamrath

**Offering Prayer:** VP of Gospel Outreach & Christian Life, Diane Meyer

**Offering:** POBLO in SWD 75%  
The Love of Christ Fund 25%

**Credentials Report:** Registrar & VP of Organizational Resources, Ann Nehring

**ADOPTION OF 2018-2020 MITE GOAL:** Treasurer, Kris Hebel &

Financial Secretary, Diane Kamrath

**Prayer:** Financial Secretary, Diane Kamrath

**2018-2020 MISSION GRANTS PRESENTATION:** VP of SFM & Mission Grants,

Kristen Kolell; Mission Grant Chairman, Marge Frank;

and committee member Lois Cook

**Prayer:** Marge Frank

**VOTING FOR 2018-2020 MISSION GRANTS**

**Nominating Committee Report:** Nomination Committee chairman, Diane Timm

**INTRODUCTION OF NOMINEES to ASSEMBLY**

**Prayer:** Leader Development Chairman, Lydia Beasley

**ELECTION OF OFFICERS**

**MITES IN ACTION SPEAKER:** LCMS Chaplain Steven Hokana

**KEYNOTE SPEAKER:** Rev. Ryan McDermott

**ANNOUNCEMENTS:** Sandy Krainz & Heidi Willison

**LUNCH PRAYER** – VP of Communications, Ruth Weckwerth

**Lunch and Break Out Sessions**

**RECESS UNTIL 1:25 P.M.**

+++++

**1:20 p.m. Music & SINGING** – Cindy Schuett

**1:30 p.m. Call to Order:** President, Barb Kaun

**OPENING PRAYER** – Rev. Douglas Peters

**INTRODUCTION OF OFFERING RECIPIENT:** VP of SFM & Mission Grants, Kristen Kolell & Ebou Faye

**CREDENTIALS REPORT:** Registrar & VP of Organizational Resources, Ann Nehring

**FINANCIAL REPORTS**

REPORT OF FINANCIAL SECRETARY: Diane Kamrath

REPORT OF TREASURER: Kris Hebel

**Presentation of the 2018-2020 Budget:** Treasurer, Kris Hebel

**BYLAW AMENDMENTS:** VP of Organizational Resources, Ann Nehring;  
& Structure Chairman, Monica Jeske

**VOTE for BYLAW AMENDMENTS**

**HEART TO HEART SISTERS:** Chairman, Mai Nhia Thao

**YOUNG WOMEN'S COMMITTEE:** Chairman, Amy Tikkanen

**Ingathering Litany & Presentation:** Senior Counselor, Rev. Dale Blanchard; VP of Gospel Outreach & Christian Life, Diane Meyer; representative of Brookfield Lutheran Church

**REPORT of the DISTRICT PRESIDENT:** Barb Kaun

**2019 LWML Convention, Mobile, AL DVD**

**RESULTS OF MISSION GRANTS VOTE:** Marge Frank

**REPORT OF TELLER FOR ELECTION of OFFICERS:** Diane Timm

**INSTALLATION OF OFFICERS:** Senior Counselor, Rev. Douglas Peters

**THANK YOU TO CONVENTION COMMITTEE:** Sandy Krainz & Heidi Willison

**ADJOURNMENT AND SENDING** – President, Barb Kaun

## Proposed Bylaws Changes

### ARTICLE II - OBJECT

The object of this organization shall be:

- A. to develop and maintain a greater mission consciousness among the women of the LWML SWD through MISSION EDUCATION, MISSION INSPIRATION, and MISSION SERVICE;
  - B. to gather funds for the support of mission grants which have been approved by the LWML SWD Board of Directors (hereinafter referred to as BOD) and the SWD LCMS District Mission Executive or LCMS World **National and International** Missions, especially those for which no adequate provision has been made in LCMS budgets.
- Rationale: Changed the word “World” to “National and International Missions” to reflect current terminology used by the LCMS.

### ARTICLE IX – APPOINTED PERSONNEL

- Rationale: The addition of the below statements clarifies the conditions of Appointed Personnel.
- A. All Appointed personnel shall:
    1. be appointed by the President, with the approval of the EC;
    2. serve two (2) years, or until their successors are appointed, and shall be eligible for reappointment **as a non-voting member of the Board of Directors (BOD);**
    3. prepare a written report for the District Convention Manual;
    4. perform any other duties set forth in the LWML SWD *Guidelines Manual*;
    5. **attend at least one BOD meeting each biennium and attend additional BOD meetings at the request of the president, and;**
    6. **prepare a written report for each BOD meeting or prepare such report at the request of the President.**
  - ~~B. Voting appointed personnel shall attend all BOD meetings and prepare a written report for each BOD meeting.~~
    - ~~1. The *Mission Lamp* Editor shall:~~
      - ~~a. be responsible to the Vice President of Communication~~
      - ~~b. be responsible for editing the *Mission Lamp* and coordinate the information with the Webmaster or other publication editors~~
    - ~~2. The Public Relations Director shall:~~
      - ~~a. be responsible to the Vice President of Communication,~~
      - ~~b. present goals and objectives of the LWML to the public and general membership through publicity and public relations,~~
      - ~~c. compose LWML SWD rally information for the Mission Lamp,~~
      - ~~d. assist with publicity for LWML SWD events, if requested.~~

3. ~~The Website Administrator shall:~~

- ~~a. be responsible to the Vice President of Communication.~~
- ~~b. maintain the LWML SWD website; keeping all information up to date.~~
- ~~c. coordinate information with the Mission Lamp editor.~~

- Rationale: Removed whole section after review. The positions of Mission Lamp Editor, Public Relations Director, and Website Administrator have no need to vote as they report to the board and will be added to section C, which will be section B after removal.

C. ~~Non-voting~~ appointed personnel shall attend at least one BOD meeting each biennium, attend additional BOD meetings at the request of the President and have the option to prepare a written report for each BOD meeting or prepare such report at the request of the President. ~~Non-voting appointed personnel may include, but is~~ **are** not limited to, the Archivist-Historian, **Deaf Community Liaison**, District Convention Chairman, Email Prayer Request Manager, Fall Retreat Chairman, Graphic Arts Consultant, ~~Heart to Heart Sisters Chairman~~, **Mission Lamp Editor**, **Music Coordinator**, Parliamentarian, **Public Relations Director**, Quarterly Manager, Scholarship Chairman, Special Funds Coordinator, TLC Fund Review Coordinator, **Website Administrator**, and Winter Getaway Chairman.

- Rationale: Removed “non-voting” and “shall attend at least one BOD meeting each biennium, attend additional BOD meetings at the request of the President and have the option to prepare a written report for each BOD meeting or prepare such report at the request of the President.” due to coverage in Section A.2, A.5 and A.6. This section will be B when the current B is removed.
- Rationale: This section is dedicated to positions listed under Appointed Personnel. Added Deaf Community Liaison, Mission Lamp Editor, Music Coordinator, Public Relations Director, and Website Administrator. Removed Heart to Heart Sisters Chairman. This position will be added to Standing Committees in Article XIII.

#### ARTICLE XI EXECUTIVE COMMITTEE

- A. The ~~Executive Committee (EC)~~ shall consist of the elected officers as voting members, with the Pastoral Counselors as advisory members.
- B. The EC shall meet prior to all BOD meetings and/or at the call of the President or four (4) members of the EC.
- C. Five (5) voting members shall constitute a quorum of the EC.
- D. The ~~Executive Committee~~ **EC** shall:
  - 1. transact business of the BOD between board meetings;
  - 2. act in an advisory capacity to the President when requested;
  - 3. fill all vacancies occurring in the elective offices, except in the office of the President;
  - 4. approve appointments made by the President;
  - 5. perform other duties as outlined in the LWML SWD *Guidelines Manual*.

- Rationale: Changed “Executive Committee” to “EC” in sections A and D. This is spelled out in Article III Members, D., “...LWML SWD Executive Committee (hereafter referred to as EC)”.

## ARTICLE XIII DEPARTMENTS AND STANDING COMMITTEES

- A. The departments shall be Communication, Gospel Outreach and Christian Life, Organizational Resources, Special Focus Ministries and Mission Grants, with a Vice President serving as coordinator of each department.  
The Department Coordinators shall:
  1. function as liaison between the respective committees in each department and the EC;
  2. attend meetings of the committees in the department, in an advisory capacity, except when representing the President, at which time she shall be ex-officio;
  3. call meetings of the department, when necessary, to plan for the development of the department;
  4. keep the President informed of the business being transacted in the various departments;
  5. keep zones and societies informed through the district publication(s) and the LWML SWD website;
  6. perform other duties as set forth in LWML SWD *Guidelines Manual*.
- B. The Standing Committees shall be Christian Life, ~~Heart to Heart Sisters Chairman~~, Leader Development, Mission Grants, Missionary Outreach and Education, Renewal, Special Focus Ministries, Structure, and the Young Woman’s ~~Committee~~ chairmen.  
The Standing Committee Chairmen shall:
  1. be active members of the LWML;
  2. be appointed by the President, with the approval of the EC;
  3. be eligible to vote on the BOD;
  4. serve a term of two (2) years, or until their successors are appointed, and shall be eligible for one (1) reappointment;
  5. appoint members of her committee;
  6. keep zones and societies informed of the committee’s programs and resources;
  7. prepare a written report for each BOD meeting and for the District Convention Manual.
- Rationale: Added Heart to Heart Sisters Chairman as part of the Standing Committees which provides multicultural women a voice through a voting position/committee on the BOD. Ensuring opportunities which motivate, equip, and challenge multicultural women in the district is the reason for this change.
- C. The Communication Department may include the E-Mail Prayer Request Manager, Graphic Arts Consultant, ~~Mailing Director~~, *Mission Lamp* Editor, Public Relations Chairman, *Quarterly* Manager, Website Administrator, and any other committee necessary for Communication.
- Rationale: Removed Mailing Director since this position is no longer needed.

- D. The Gospel Outreach and Christian Life Department may include the Christian Life Committee, Fall Retreat Committee, Young Woman's Committee, Winter Getaway Committee and any other committees necessary for Gospel Outreach and Christian Life.
- E. The Special Focus Ministries and Mission Grants Department may include the Deaf Liaison, Heart to Heart Sisters Chairman, Mission Grants Committee, Missionary Outreach and Education Committee, Special Focus Ministries Committee, and any other committees necessary for Special Focus Ministries and Mission Grants.
- F. The Organizational Resources Department may include the Archivist-Historian, Leader Development Committee, Nominating Committee, Renewal Committee, Structure Committee and any other committees necessary for Organizational Resources.

## ARTICLE XVII MISSION GRANTS

- A. A mission grant is a monetary project in the interest of missions and adopted by the delegates at the District Convention.
- B. In carrying out the approved mission grants of the LWML SWD, no indebtedness shall be incurred.
- C. Selection of mission grants;
  - 1. Mission Grant proposals for consideration by the LWML SWD may be submitted by any SWD LCMS member, society, or zone. Suggestions shall be sent as directed on the mission grant form to the SWD Vice President of Special Focus Ministries and Mission Grants (Coordinator of the Mission Grants Department) seven (7) months prior to convention and shall be signed by the person or group submitting the proposal and counter-signed by a pastor or zone Pastoral Counselor.
  - 2. The Mission Grants committee shall study the proposals and eliminate any which are not complete or did not meet the printed deadline date.
  - 3. All proposed mission grants to groups within the district shall be approved by the SWD LCMS President after being submitted to and reviewed by the SWD LCMS District Mission Executive.
  - 4. All proposed mission grants to groups outside the district shall be approved by LCMS ~~World~~ **National or International** Missions.
  - 5. The EC, including the Pastoral Counselors, shall prayerfully and thoroughly review all proposals which are approved by the SWD LCMS President or LCMS ~~World~~ **National or International** Missions, eliminating any which do not meet the criteria as printed on the mission grants proposal application form.
  - 6. The BOD, together with the Pastoral Counselors, shall study all mission grant proposals and select five (5) or more for consideration by the District convention.
  - 7. Each delegate at the District Convention shall vote, by ballot, for five (5) grants from the list submitted to the convention by the BOD.
  - 8. There shall be no mission grants to endowment funds not established and/or administered by the LWML SWD.
- Rationale: Section C., numbers 4 and 5: Changed the word "World" to "National or International Missions" to reflect current terminology used by the LCMS.

- D. The BOD, with input from the Vice President of Special Focus Ministries and Mission Grants, Mission Grants Committee and EC, shall establish the total grant goal for each biennium. The total dollar amount of mission grants on the ballot should be at least one and one-half times the grant total.
- E. Mission Grant Funds:
1. Funds voted for a mission grant must be disbursed or put to use within a four (4) year period from the time of the vote. The BOD has authority to extend the time in case of extenuating circumstances, or to reallocate the funds.
  2. In the event that changes in mission grant plans occur, the BOD shall be authorized to act, either in session, by mail, or by electronic messaging.

## LUTHERAN WOMEN'S MISSIONARY LEAGUE

### SOUTH WISCONSIN DISTRICT

#### STANDING RULES

1. The Treasurer of the LWML SWD shall be authorized to pay travel expenses at the rate of thirty (30) cents per mile.
2. The honorarium for speakers at zone rallies and zone workshops shall be a minimum of twenty-five dollars (\$25), plus thirty (30) cents per mile expense.
3. The LWML SWD shall have a *Guidelines Manual* that is maintained by the President and reviewed each biennium.
4. The LWML SWD Conventions shall be held biennially in the even-numbered calendar year, between LWML Conventions, during the month of June.
5. Any proposed mission grant shall be removed from the ballot if, after one warning, any distribution of literature or materials is made which might influence the delegates' vote.
  - Rationale: The words "a minimum of" are added to Standing Rule number 2 to give more freedom to the LWML SWD Zones in giving an honorarium to their speaker.

## **LWML SWD Mission Grant Proposals for 2018 – 2020**

### **1. Support for Sri Lanka with a Multipurpose Construction Project \$40,000**

**Purpose:** To allow the Ceylon Evangelical Lutheran Church in Sri Lanka to move forward with the training of native pastors and deacons as well as provide a location for the central office of the CELC in addition to sanctuary and preschool space for Immanuel Lutheran Church in the capital of Colombo.

**WHEREAS** the LCMS has been active in Sri Lanka since 1927 and is evidenced by 4 congregations and 7 preaching stations, and,

**WHEREAS** the need to train pastors and deacons is evidenced by interest and enrollment in pre-seminary classes founded by LCMS missionaries in January 2017, and,

**WHEREAS** the Ceylon Evangelical Lutheran Church would benefit by having a physical address for business purposes, and,

**WHEREAS** the local congregation and Sri Lankans in general do not have the financial means to establish and support such a building program (The average weekly pay for a worker is \$10), and,

**WHEREAS** the church in Sri Lanka has obtained the necessary permission from the Board of Directors of the LCMS to move forward with a building project that will include a new sanctuary, room for seminary training and housing, office for the Ceylon Evangelical Lutheran Church and a preschool (Total cost, \$350,000 for construction, not including furnishings), be it therefore

**RESOLVED** that the LWML SWD in convention vote the sum of \$40,000 toward the construction and furnishing of the multi-purpose building project undertaken by the Ceylon Evangelical Lutheran Church in Colombo, Sri Lanka.

### **2. Bethany Ev. Lutheran Church Ministry Outreach \$12,000**

**Purpose:** To minister to the physical and spiritual needs of the people of the central city of Milwaukee. Funds received would be used for the following outreach programs: Kids for Christ program, food pantry, the soup kitchen, the men's fellowship program, distribution of school supplies, ministry to the homeless, and the clothing pantry.

WHEREAS Luke 19:10 tells us, *“For the Son of Man came to seek and to save the lost.”* and,

WHEREAS we learn in 2 Corinthians 5:5 that, *“He who has prepared us for this very thing is God, who has given us the Spirit as a guarantee.”* and,

WHEREAS God has placed Bethany in the heart of an area of Milwaukee’s inner city that is deeply in need of

WHEREAS Bethany has accepted the responsibility of reaching His lost children to help them meet their physical and spiritual needs, and,

WHEREAS God has brought Pastor Ikanih to lead the ministry at Bethany, be it therefore

RESOLVED that the LWML SWD in convention vote the sum of \$12,000 so that Bethany Ev. Lutheran Church can continue to reach out to the lost souls of the city of Milwaukee.

### **3. International Student Ministry, UW-Milwaukee**

**\$7,500**

Purpose: Continued support and staffing for ministry and aid to internationals

WHEREAS Matthew 28:19 states, *“Go and make disciples of all nations,”* and,

WHEREAS International Student Ministry (ISM) is a Recognized Lutheran Church-Missouri Synod Service Organization, and,

WHEREAS ISM is a ministry of Luther Memorial Chapel, where friendship and hospitality to international students, scholars, immigrants, and families is offered, and,

WHEREAS ISM is an outreach ministry that seeks to meet the physical, emotional, and spiritual needs of arriving internationals in a distinctly Lutheran approach to the sharing of the Gospel, and,

WHEREAS Internationals are interested in learning the English language and about the American culture, and,

WHEREAS Internationals perceive that Americans are predominantly Christian, and,

WHEREAS Internationals have a need for friendship, warm clothing, household furnishings, and help navigating within the American society, and,

WHEREAS Ninety percent of internationals come from countries that are not predominantly Christian and two thirds of the countries are closed to Christian missionaries, and,

WHEREAS Internationals are intelligent, inquisitive, and by nature risk takers and open to new experiences (an atmosphere in which people are most open to the Gospel), and,

WHEREAS Through the relationships built, the internationals are invited to participate in Bible study and worship so that when they return to their home countries they will be able to share this Gospel message with their families and communities, be it therefore

RESOLVED That Luther Memorial Chapel by receiving \$7,500 in funding for ISM from the LWML SWD, ISM will be able to continue to reach out; and expand these efforts to those from other lands who have not heard the Gospel. We are seeking new and creative ways for this congregation to share the Gospel in a compassionate manner with the internationals whom God is sending to the University of Wisconsin-Milwaukee and the surrounding community. Our efforts will continue to meet the mission guidelines of the League.

#### **4. Reaching Visually Impaired Inmates with God's Love**

**\$8,000**

Purpose: Open work centers to produce the ESV in 14 point APhont for inmates

WHEREAS Hebrews 13:3 says, "*Remember those who are in prison as though in prison with them, and those who are mistreated since you also are in the body,*" and,

WHEREAS Lutheran Braille Workers receives requests weekly for large print Bibles by visually impaired people who are incarcerated, and,

WHEREAS only a small percentage of inmates are allowed to receive our current large print Bible because of the size and spiral binding and,

WHEREAS every visually impaired person who is incarcerated should be given the same opportunity to worship and study the same translation as sighted people, be it therefore

RESOLVED that the LWML SWD in convention vote the sum of \$8,000 to help fund opening new Lutheran Braille Workers' large print centers for the production of the ESV Bible in 14 point APhont to be distributed to visually impaired people who are incarcerated throughout the United States.

## 5. Alaska Native Discipleship Teen Camp

**\$20,000**

- Purpose: Offer two Native Teen Camps (one for younger teens and the other for older teens) to disciple these young people in their faith walk with the Lord and equip them to make wise choices that will impact the rest of their lives as they become leaders and good citizens as caretakers of their families, the land and their communities.
- WHEREAS 2 Timothy 2:15 says, *“Do your best to present yourself to God as one approved, a worker who has no need to be ashamed, rightly handling the word of truth.”* and,
- WHEREAS Rev. Dave Sternbeck (Nu-chah-nulth) and his wife, Rosemary, moved to Alaska in 2012 to establish the Mission Training Center in Fairbanks and build connections between Native villages and volunteer teams, and,
- WHEREAS volunteers, who have gone to the same Native villages for over 10 years teaching VBS, have seen the young people grow up and want to disciple them further in their faith, and,
- WHEREAS after the first Teen Camp in 2014, 18 youth were baptized over the following three summers, and the number of teens attending has nearly tripled over the four years, with interest continuing to grow, and,
- WHEREAS Teen Camp has outgrown the Mission Training Center and Camp Bingle and it is desirable to offer a second teen camp with an emphasis on teaching life skills to older teens and challenging them to grow in their faith relationship with Jesus Christ, and,
- WHEREAS of the 567 federally recognized tribes in the U.S., 229 are in Alaska where 16% of the population is Alaska Native and the majority live in 200 villages, and,
- WHEREAS alcoholism, abuse and suicide plague Native communities at a rate that is among the highest in the nation and over one in four Alaska Natives live in poverty, and,
- WHEREAS statistics indicate that less than 5% of Native Americans know Jesus as their Lord and Savior and many teens lack good Christian role models, and,
- WHEREAS funds are needed to provide scholarships for Native teens to cover the cost of round trip flights from the villages, food, activities and camp rental fees including bringing in trained Native counselors, therefore be it
- RESOLVED that the LWML SWD assembled in convention June 22-23, 2018 in Waukesha, grant the sum of \$20,000 to cover airfare, food and fees for Alaska Native teens attending teen camp.

## **6. LCMS Mission Central Support for Missionary Expenses**

**\$10,000**

Purpose: Spreading the Gospel

WHEREAS since we have the ability to act NOW on Galatians 6:10, “*Therefore, as we have the opportunity, let us do good to all people, especially to those who belong to the family of believers.*” and,

WHEREAS Jesus has called many to work for Him, and since those called are required to provide the necessary resources to meet expenses needed before and throughout mission service, and,

WHEREAS the staff at Mission Central are daily involved with the very most current missionary needs and updates and can immediately disperse it when it is available, be it therefore

RESOLVED that the LWML SWD adopt as one of its mission grants for the 2018-2020 biennium the sum of \$10,000 to enable this missionary support.

## **7. Lutheran Books for Missionaries Around the World**

**\$12,000**

Purpose: To provide Lutheran books translated in the language of the people they serve for Gospel outreach

WHEREAS the Holy Spirit encourages us to reach out to all people with Christ’s saving Gospel in a language they can understand, as at Pentecost: “*How is it that we hear, each of us in his own native language?*” (Acts 2:8), and,

WHEREAS LCMS missionary to Papua New Guinea, Rev. Larry Matro, says, “Nothing can reach a person better than the Word of God in a language they can truly understand,” and,

WHEREAS LCMS missionaries and church partners around the world are facing a big hurdle to introducing new believers to Jesus because they lack good Lutheran books translated in the languages of the people they serve, and,

WHEREAS for more than 25 years the Lutheran Heritage Foundation (a LCMS recognized service organization) has been translating books like *Luther’s Small Catechism* (in more than 80 languages) and *A Child’s Garden of Bible Stories* (in more than 25 Languages), therefore let it be

RESOLVED that the LWML SWD in convention vote the sum of \$12,000 to help fund supplying our LCMS missionaries and church partners with good Lutheran books translated in the languages of the people they serve.

**8. Financial Assistance for Concordia Theological Seminary, Fort Wayne, IN**  
**Food & Clothing Co-op to Purchase Food** **\$10,000**

Purpose: Provide food for students preparing for full-time church work to reduce the financial needs of the family during their time of preparation.

WHEREAS Christ in His Holy Word commands us to go and teach all nations about Him and what He has done for us (Matthew 28:19), and,

WHEREAS individuals from around this country and the world come to Concordia Theological Seminary to prepare to serve God's people here in the United States as well as in mission work around the world, and,

WHEREAS when students make the decision to leave their jobs and come to the seminary with their families, they no longer have the same financial flow of funds that they had before, but continue to have the same financial needs, and,

WHEREAS spouses in many student families do find employment in Fort Wayne, but most are marginalized because the employers know that they will only be here for a short time, throwing families into difficult financial positions, and,

WHEREAS the seminary seeks to reduce this financial burden by providing students access to a Food Co-op, which currently supplies between 80% and 90% of all families' food and household needs each month at no cost to the student, relying upon donations from individuals, congregations and organizations, therefore be it

RESOLVED That the LWML SWD assembled in Convention in Waukesha, Wisconsin in June 2018 grant the sum of \$10,000 for the purchase of perishable items for the Food and Clothing Co-op of Concordia Theological Seminary, Fort Wayne, Indiana for the 2018-2020 biennium.

## **9. Shelter My Sheep – Free at Last Ministry**

**\$20,000**

- Purpose: Continue to provide support of spiritual care, mentoring inside and outside of prison walls
- WHEREAS continued support of spiritual care is crucial to any new Christian,
- WHEREAS the Holy Spirit working through Bible studies focused on the whole Word of God, and knowing that our Lord and Savior Jesus Christ has a plan for all who believe, and,
- WHEREAS providing tools to help guide these new lambs for developing structured “crime-free” lifestyles for themselves that will effectively sustain them on their journey back into the general public, and,
- WHEREAS Romans 12:1 encourages, “*So brothers, since God has shown us great mercy, I beg you to offer your lives as a living sacrifice to him. Your offering must be only for God and pleasing to him. This is the spiritual way for you to worship.*” The needs of those released from prison are great, and the staff and volunteers of Free at Last Ministry are struggling to meet those needs, be it therefore
- RESOLVED that the LWML SWD in convention approve \$20,000 to provide continued mentoring and assist in locating safe housing for those released new lambs brought to the Lord through Free at Last Ministry.

## **10. We Have Come Into This House/Gospel Lutheran Church**

**\$50,000**

- Purpose: To enhance worship experience
- WHEREAS the paramount need for the successful operation of inner city Lutheran churches (schools) continues to escalate in the city of Milwaukee, and,
- WHEREAS the clear value one obtains from worshipping and studying in an architecturally historical house of the Lord makes a clear impression on ones’ life, and,
- WHEREAS also attracting new members to worship truly becomes easier once they have visited a well maintained historical location such as Gospel Lutheran Church, and,
- WHEREAS furthering our mission to bring lost souls to salvation in Christ and by doing so equip the ever-changing community to become believers and live a fruitful life in Him, be it therefore

RESOLVED           that we, the LWML Society of Gospel Lutheran Church, request that the LWML SWD grant the sum of \$50,000 to Gospel Lutheran Church to replace the nearly 100 year-old roof of the church and school.

**11.   Support for Concordia Seminary’s International Graduate School Students                               \$7,500**

Purpose:               Concordia Seminary’s program of forming international Graduate School students prepares them to carry out the Great Commission. When these students earn their advanced-level theological degrees and return to their home countries, they will be in key positions to expand the global proclamation of Christ’s love and the message of eternal salvation through faith in Him. Back in their home nations, these students will become teachers and church leaders. In these positions, they will have a considerable impact – one that will reach far into the future – on the spreading of the Gospel message throughout many countries.

WHEREAS           the global proclamation of Christ’s love and the message of eternal salvation through faith in Him continues to be paramount and, blessedly, the sharing of the Gospel message is increasing in a number of different parts of the world, and Lutheranism, in particular, is spreading in entire regions of different continents, and,

WHEREAS           there is a significant shortage of well-formed Lutheran pastors with advanced theological education in the majority of these countries, options outside the U.S. are few for the advanced theological study that is needed for these pastors, and few overseas Lutheran church bodies have resources to send their most capable students to the U.S. for this advanced study, and,

WHEREAS           Concordia Seminary’s Graduate School not only stands ready to welcome these international students, but continues to give high priority to their formation, and,

WHEREAS           the Lutheran Church—Missouri Synod has named supporting and expanding theological education as one of its key mission priorities to ensure that there will be well-formed pastors to lead Lutheran congregations throughout the world, therefore be it

RESOLVED           That the LWML SWD in convention vote the sum of \$7,500 to provide vital support for Concordia Seminary’s International Graduate School students.

## 12. LUMIN Schools Discipleship Program

**\$12,513**

- Purpose: By integrating biblical truth throughout their curriculum, LUMIN Schools provide a traditional Christian education with rigorous academics, character building, and faith development of children grades K4-8. Supplying teachers and students with adequate copies of *The Story Bible*, *Faith Alive* ESV Student Bible, and Luther's Small Catechism with Explanation will augment and enliven their instruction in the *One in Christ* religious education curriculum and RISE UP character development program, realizing our sincere desire to make them disciples of our Lord Jesus Christ.
- WHEREAS the Lutheran Urban Mission Initiative, Inc. (LUMIN) has responded to the need for Christ's influence in Milwaukee's urban communities, and,
- WHEREAS by re-opening two closed Lutheran schools, assisting four failing Lutheran schools, and converting a secular school to a Christian school, Lutheran education has resumed or continued in Milwaukee's and Racine's urban communities, and,
- WHEREAS the fruit of LUMIN's educational ministry and the evangelistic efforts of LUMIN's staff is evidenced by the increased enrollment in all LUMIN schools, and an increase in baptisms and personal engagement in LUMIN Schools' sponsoring churches, and,
- WHEREAS all LUMIN students, along with academic and leadership training, receive religious instruction in the form of discipleship and Christian character development as part of LUMIN School's religious education curriculum, be it therefore
- RESOLVED that the LWML SWD in convention vote the sum of \$12,513 to purchase the resources needed to facilitate LUMIN's Christ-centered Discipleship Program at the K4 to 8<sup>th</sup> grade levels: *The Story Bibles*, *Faith Alive* ESV Student Bibles, and Luther's Small Catechism with Explanation.

## 13. Prayers for Staff Supporting People with Disabilities

**\$4,000**

- Purpose: The Goal is to encourage, with God's Word and prayers, the staff who care for the people with intellectual and developmental disabilities (IDD) that Bethesda Lutheran Communities supports in 13 states. A "Prayers for Staff" book would put God's Word into the hands of every staff person, including newly hired employees, with the prayer that the Holy Spirit blesses them as they care for people with disabilities with the love of Jesus.

WHEREAS St. Paul tells us *“to encourage one another and build one another up, just as you are doing.”* (1 Thess. 5:11), and *“truly God listens to my prayer...Blessed be God that He has not rejected my prayer or removed His steadfast love from me.”* (Psalm 66:19-20), and,

WHEREAS giving Christ-centered support for people with intellectual and developmental disabilities is a joyful, yet demanding job, and working with co-workers can be stressful, and,

WHEREAS God’s Word is used by the Holy Spirit to encourage in all circumstances, and the Lord is faithful in hearing and answering our prayers, letting us know we are loved and forgiven, and,

WHEREAS governmental funding cannot be used for religious purposes, be it therefore

RESOLVED that the LWML SWD members gathered in convention in Milwaukee June 22-23, 2018 grant the sum of \$4,000 to Bethesda Lutheran Communities “Prayers for Staff” book to give to their 2,600 employees and future employees as supply allows.

#### **14. Scholarships for Low Income Campers at Camp LuWiSoMo**

**\$20,000**

Purpose: Supplement campers’ fees for families of low income children

WHEREAS Camp LuWiSoMo has received many requests in past summers to allow funding for low income campers to attend camp, and,

WHEREAS the camp’s current budget for 2018-2020 does not allow for extra funding to allow discounting camper rates, and,

WHEREAS new campers are the long-term life of Camp LuWiSoMo, and will continue to spread the word of our operations and communicate the value of camp offerings, and,

WHEREAS the families of many campers are not able to financially afford the cost of camp, and,

WHEREAS the LuWiSoMo Board of Directors believe it is important to give every child an opportunity to attend camp during their impressionable years and would like to see every child come to camp, regardless of ability to pay, and,

WHEREAS the full cost of the camp, estimated at \$400 per camper, would be offset on a graduated scale based on the family income for that family, and,

WHEREAS	LuWiSoMo provides a safe environment for youth to expand their faith in a beautiful outdoor setting, be it therefore
RESOLVED	that the LWML SWD in convention vote the sum of \$20,000 to fund scholarships for two years for children to attend our summer camp in Wild Rose, Wisconsin.

**15. Final Printing of the Indonesian Lutheran Hymnal**

**\$20,000**

Purpose:	To provide a Lutheran Hymnal for faithful Lutherans in Indonesia
WHEREAS	the Indonesian Christian Lutheran Church (GKLI) is over 50 years old and is seeking to refine and solidify their identity as a faithful Lutheran church, and,
WHEREAS	the GKLI has requested help from the Lutheran Church Missouri Synod (LCMS) for guidance in teaching their pastors and leaders, and,
WHEREAS	after several workshops have been held by the LCMS, the Bahasa Book of Concord has been reprinted by a local Christian publishing company and distributed at these workshops, and,
WHEREAS	now the GKLI has requested help from the LCMS to assemble a truly Lutheran hymnal which would contain worship liturgies and hymns that proclaim the Word of God rightly divided in Law and Gospel, and,
WHEREAS	a hymnal committee has been formed and met several times with an LCMS deaconess who has helped to compile several ethnic hymnals, and,
WHEREAS	the project is in the process of getting liturgies and hymns translated and assembled, and,
WHEREAS	the target printing date/deadline is Reformation 2020, be it therefore
RESOLVED	that the LWML SWD convention vote the sum of \$20,000 to fund the final printing of the Indonesian Lutheran Hymnal Project.

**16. SWD Church Worker Grant**

**\$30,000**

Purpose:	Assist church worker students (teachers, pastors, deaconess, DCE, DCO, lay ministers) who are studying to be full-time church workers at one of the synodical universities/seminaries with funds to be used toward tuition and board.
----------	---

WHEREAS Jesus gave his final command in Mark 16:15, *“Go into all the world and Preach the Good News to all creation”* and Romans 10:14 says, *“how can they believe in the One of whom they have not heard? And how can they hear without someone preaching for them?”*, and,

WHEREAS The need for pastors, teachers and other professional church workers is critical both to serve the church at large and in the mission field, and,

WHEREAS The 2017-2018 average annual expense at a Synodical university is \$43,000 and at a Synodical seminary is \$50,000, and,

WHEREAS Such high educational costs have caused a genuine hardship for most students, many leaving with an average of \$22,500 or more per year in indebtedness, and has forced some to delay their Christian education or to drop out of college entirely, and,

WHEREAS the South Wisconsin District has over 150 church work students enrolled in one of our Synodical universities, and 25 enrolled in one of our Synodical seminaries for the 2016-2017 school year, and,

WHEREAS the South Wisconsin District provided aid to 35 church work students for the 2017-2018 school year, but the amount awarded was only 11% of their unmet need, and,

WHEREAS the seminaries have requested each district contribute \$3,000 per student per year, and,

WHEREAS the South Wisconsin District of the Lutheran Women’s Missionary League has representation on the South Wisconsin District Student Aid and Recruitment Committee, and thus, has a voice regarding distribution of moneys for grants, therefore be it

RESOLVED that the LWML SWD assembled in Convention, June 22-23, 2018, adopt the allocations of \$30,000 to the South Wisconsin District Student Aid and Recruitment Committee for scholarships for South Wisconsin District students attending one of our Synodical colleges or seminaries in preparation for full time service in the church.

## **17. SOS Center Enrichment Program**

**\$22,580**

Purpose: To provide educational enrichment in a safe Christian environment

WHEREAS the SOS Center provides a safe, caring, Christian environment for inner city youth and their families, and,

WHEREAS inner city youth will be provided with opportunities to learn and improve their educational skills while learning about the Gospel of Christ, and,

WHEREAS with God's love and guidance the youth can be guided to make better choices where they can improve their education, finish school, and stay away from drugs and jail, and,

WHEREAS inner-city Milwaukee youth need enriching educational and Christian activities offering opportunities and experiences outside of their community, connecting with others, and expanding their horizons, be it therefore

RESOLVED that the LWML SWD in convention vote the sum of \$22,580 to help fund the cost for one year for urban Milwaukee youth to attend After-School, Summer VBS, and Born to Lead because Christ Leads Us (BLCL) Leadership training to ensure their continued learning, skill development and growth in Christ's word.

## 18. Camp Courage: A Place of Hope and Healing

**\$4,000**

Purpose: For children affected by disaster to gain spiritual tools to deal with their fears

WHEREAS God speaks to us in Isaiah 41:10, "*Fear not, for I am with you; be not dismayed, for I am your God: I will strengthen you, I will help you, I will uphold you with my righteous right hand*" and in Romans 8:28, "*And we know that for those who love God all things work together for good for those who are called according to His purpose*", and,

WHEREAS children, like adults, can be profoundly affected by disasters with an impact leaving them spiritually and emotionally drained, mentally and physically distressed, and,

WHEREAS LCMS Disaster response provides Camp Courage, a vacation Bible school type camp that brings the Word of God to children in a way that enables them to grasp God's great love and compassion, and,

WHEREAS we pray that Camp Courage will be a blessing to those communities affected by disasters as God's comfort is brought to children, reminding them that they are loved by God and baptized into His family, therefore be it

RESOLVED that the LWML SWD assembled in convention during 2018, adopt as a mission grant to the Lutheran Church-Missouri Synod's Disaster Response Ministry the sum of \$4,000 for Camp Courage – A Place of Hope and Healing."

**19. Post-Seminary Applied Learning and Support (PALS) Curriculum and Resources** **\$3,000**

Purpose: Provide study books for new pastors and their wives at no cost to them

WHEREAS in Jeremiah 3:15, “*And I will give you shepherds after my own heart, who will feed you with knowledge and understanding*”, and,

WHEREAS new pastors and wives are encouraged to attend Post-Seminary Applied Learning and Support (PALS) Gatherings to help pastors and wives make a successful transition from seminary life to parish ministry, and,

WHEREAS PALS Gatherings and curriculum resources have greatly blessed pastors and wives through a transitional period, and,

WHEREAS continuing educational expenses frequently add to financial challenges for new pastors and their families, therefore be it

RESOLVED that the LWML SWD assembled in convention during 2018, adopt as a mission grant to The Lutheran Church-Missouri Synod’s Pastoral Education the sum of \$3,000 for Post-Seminary Applies Learning and Support (PALS) Curriculum Resources.

**20. Worker Wellness for Chaplain Families** **\$3,000**

Purpose: To provide affordable opportunity for wives to attend wellness training

WHEREAS The Great Commission of our Lord and Savior, Jesus Christ, commands us to reach out to all at home and abroad, further, “*And He gave some as apostles, and some as prophets, and some as evangelist, and some as pastors and teachers to equip the saints or the work of the ministry for building up the body of Christ.*” (Ephesians 4:11-12), and,

WHEREAS The LCMS Ministry to the armed Forces supports almost 200 chaplains who represent the church on active duty, the reserves, the national Guard and Civil Air Patrol meeting the needs of God’s people (military personnel and their families) where needed most and who serve in the vocation as members of our Armed Forces, and,

WHEREAS Church Worker retreats are focused on teaching God’s kingdom workers to care for themselves and their families so that they can better care for those they serve, and,

WHEREAS Military benefits provided by the government includes an allowance from the U.S. Government (TAD/TDY/PTDY) for Chaplain travel expenses but does not cover costs for spouses or children making it financially challenging for families to attend Wellness Retreats, therefore be it

RESOLVED that the LWML SWD in convention during 2018, adopt as a mission grant to The Lutheran Church Missouri Synod's Ministry to the Armed Forces the sum of \$3,000 for Worker Wellness for Chaplain Families.

## **21. Rosa J. Young Academies Organizational Development**

**\$5,000**

Purpose: To provide the educational, social, and emotional pillars upon which academically excellent servant leaders are developed in a safe, supportive, and nurturing learning community.

WHEREAS the Lord in His wisdom speaks to us in Proverbs 22:6, "*Train up a child in the way he should go; even when he is old he will not depart from it*", and,

WHEREAS the number of youth in the Lutheran Church-Missouri Synod has been declining steadily in the last generation; worthy models of Christian ministry and vocation are needed to inspire young people to embrace church careers and vocations, and,

WHEREAS the RJY Academies & After School Program Initiative will vigorously collaborate with congregations in rural, urban, and inner-city communities to inspire the establishment of a new framework of Rosa J. Young Academies utilizing the benefits of Charter school structure, and,

WHEREAS through the Word of God and Holy Spirit, the means of grace can make new believers from academies and afterschool tutorial and mentoring opportunities by providing positive life changing spiritual and character building programs. Therefore, be it

RESOLVED that the LWML SWD assembled in convention during 2018, adopt as a mission grant to The Lutheran Church-Missouri Synod's Black & African Ministry the sum of \$5,000 to help fund the "Rosa J. Young Academies Education Management Organization".

<u>RANK</u>	<u># of Votes</u>	<b>MISSION GRANTS</b>	<b>AMOUNT</b>
		1. Support for SriLanka with a multipurpose construction project	\$40,000
		2. Bethany Ev. Lutheran Church Ministry Outreach	\$12,000
		3. International Student Ministry, UW-Milwaukee	\$7,500
		4. Reaching Visually Impaired Inmates with God's Love	\$8,000
		5. Alaska Native Discipleship Teen Camp	\$20,000
		6. LCMS Mission Central support for missionary expenses	\$10,000
		7. Lutheran books for missionaries around the world	\$12,000
		8. Financial Assistance for Concordia Seminary, Ft. Wayne, Food & Clothing Co-op to purchase food	\$10,000
		9. Shelter My Sheep – Free at Last Ministry	\$20,000
		10. We Have Come into this House – Gospel Lutheran Church	\$50,000
		11. Support for Concordia Seminary, St. Louis, International Graduate School Students	\$7,500
		12. LUMIN Schools Discipleship Program	\$12,513
		13. Prayers for Staff Supporting People with Disabilities	\$4,000
		14. Scholarships for Low Income Campers at Camp LuWiSoMo	\$20,000
		15. Final Printing of the Indonesian Lutheran Hymnal	\$20,000
		16. SWD Church Worker Grant	\$30,000
		17. SOS Center Enrichment Program	\$22,580
		18. Camp Courage: A Place of Hope and Healing	\$4,000
		19. Post-Seminary Applied Learning & Support (PALS) Curriculum & Resources	\$3,000
		20. Worker Wellness for Chaplain Families	\$3,000
		21. Rosa J. Young Academies Organizational Development	\$5,000

## Nominee for Vice President of Gospel Outreach and Christian Life \_\_\_\_\_

**Judith Gitzlaff, Wales**



**LWML Experience:** (Society) President since 2013, Secretary since 2014, President prior to 2006  
(Zone 17) President since 2014 and before 2006, VP prior to 2004  
(District) Exhibit Chairperson 2018 Fall Retreat, Nominating Committee PR 2018 Convention, District PR, Exhibit chair 2016 District Convention, Past Fall Retreat Committees

**Church Related Activities:** Member of Bethlehem Lutheran in Wales; Head of Altar Guild 2017 to present and prior to 2006, Sunday School Superintendent 2004-2006, Third Grade S.S. Teacher 1988-2004, VBS Teacher 1983 to early 1990's, Quilting and ushering many years

**Community Service:** Help with Bible Studies at memory care facilities 2007 to present, Volunteer Aide in Kettle Moraine School District 1986-1990

**Education:** Shadyside Hospital School of Nursing in Pittsburgh, PA, Nursing Diploma 1977

**Occupation/Employment:** Part-time RN in Clinic

**Vision Statement:** "My vision is that every woman in the LCMS know they are members of LWML and respond to God's love by using their God-given talents and treasures to serve in His kingdom."

Proverbs 15:30, *"A cheerful look brings joy to the heart, and good news gives health to the bones."*

## Nominee for Vice President of Organizational Resources\_\_\_\_\_



**Ruth Mueller**, Wauwatosa

**LWML Experience:** (Society) Secretary 2016-2018, Treasurer 2010-2016, President – many years (Zone 4) Christian Life Chairman 2012-2017, President 2004-2008, Treasurer – various times (District) Recording Secretary 2014-2018, Convention Chairman 2012-2014, Appointed VP Mission Grants (filled Vacancy in 2013), Financial secretary 1998-2002, and various committees

**Church Related Activities:** Member Pilgrim Lutheran Church, Strategic Planning Committee 2017, Choir 1985 to present, Evangelism Committee 1990's, VBS Teacher, Sunday School Teacher

**Community Service:** Block Watch Captain, PTA Chairman, Day Care Board Member

**Education:** BS – Northern Illinois University

**Occupation/Employment:** Retired homemaker and part-time caregiver, Rent-A-Daughter, Lunch Lady at Pilgrim School

**Vision Statement:** “As we see society changing and various worldviews becoming more prominent, my vision for LWML SWD is to keep the mission of the Gospel of Christ the main thing. It is important to encourage and uphold the women of the LWML in South Wisconsin District to see the importance of a strong faith as proclaimed by Scripture and the working of the Holy Spirit in our lives. This can be done throughout the district as we share time together at inspiring rallies, retreats, servant events and mission trips. We seek to be God’s instruments in the mission fields where we are and use our time, talents and treasures wherever and whenever He has need of us.”

*Isaiah 40: 9, “You who bring good tidings to Zion, go up on a high mountain. You who bring good tidings to Jerusalem, Lift up your voice with a shout, Lift it up, do not be afraid; say to the towns of Judah, ‘Here is your God!’”*

## Nominee for Recording Secretary \_\_\_\_\_



**Jan Ladendorf, Bayside**

**LWML Experience:** (Society) President at Trinity Freistadt since 2016; Member previously at St. John's in Glendale and Prince of Peace in Texas  
(Zone 5) President 2012-2016  
(District) Heart to Heart Event Committee 2016-2017, SWD-BOD 2012-2016

**Church Related Activities:** Member of Trinity Freistadt Lutheran Church in Mequon; Member of Radio Choir 2012-2017; Secretary of Lutheran Special School & Education Services BOD and Executive Committee 2007 to present; Hospitality Committee for LCMS SWD Convention 2014 to present

**Community Service:** Volunteer for Feed My Starving Children program

**Education:** BS – Concordia, St. Paul; MS - Southern Illinois University – Edwardsville

**Occupation/Employment:** Retired Lutheran Elementary Teacher (taught 35 years in five states)

**Vision Statement:** "My vision for the LWML SWD is to have them continue to be leaders in giving our women opportunities to serve the Lord with gladness by offering activities and resources that allow us to use, our God-given talents in service to God and His people, here in our societies, district, and the world at large."

*Nahum 1: 15a, "Look, there on the mountains, the feet of one who brings good news, who proclaims peace!"*

## Nominee for Financial Secretary

---

**Marilyn Belter**, Berlin



**LWML Experience:** (Society) President at Grace Ev. Lutheran Church (Zone 12) President 2014-2018, Vice-President 2013-2014 (District) Winter Getaway 2018 Treasurer, Nominating Committee Secretary 2014-2016

**Church Related Activities:** Member of Grace Ev. Lutheran Church (Omro), Funeral Dinners, Member of Fellowship Committee 2011-2013, Financial Secretary of Immanuel Lutheran Church 2005-2006, Sunday School Teacher

**Community Service:** Pine Grove Cemetery Association Secretary 2016 to present and Board Member 2013 to present; Berlin Conservation Club Member; Mercy Medical Center 25 Year Club

**Education:** Associate Degree Nursing --Milwaukee Area Technical College, Wisconsin Dells H.S.

**Occupation/Employment:** Retired RN (Affinity Health System, St. Michaels Hospital, Mt. Sinai Hospital)

**Vision Statement:** "My vision for LWML-SWD is to continue to walk in faith and not by sight, to reach our mission goals, and to stay true to our purpose. To engage, encourage, educate, equip each Lutheran woman in her faith walk with the Lord so she may truly enjoy serving our Lord wherever He has placed her."

Isaiah 61: 1, *"The Spirit of the Sovereign Lord is on me, because the Lord has anointed me to preach good news to the poor."*

## Nominee for Financial Secretary

---

**Wendie Staus**, Hartford



**LWML Experience:** (Society) Attend meetings and events

(Zone 18) Attend Zone Rallies;

(District) Attend Retreats; Delegate SWD Convention Mid-2000's; Remembrance/Memory book project Mid-2000's;

(National) Attended 1999 National Convention in Minneapolis, MN

**Church Related Activities:** Member of Divine Savior in Hartford; Community Outreach Board, current; Small group Bible study participant 2016 to present; Counting team member 2016 to present; Adult choir, praise team, and bell choir for many years; Coordinator of Free Community Thanksgiving Dinner 2010 to present; Family Promise Volunteer, current; Fish Boil volunteer; past Sunday School

teacher (10+ years); past VBS teacher; Evangelism Board 2005-2011; Financial Secretary 2000-2003; Recording Secretary 1996-1999

**Community Service:** Volunteer at Aurora Medical Center in Hartford 2018

**Education:** Moraine Park Technical College (Medical Transcription) 2004; Cedarburg HS 1969

**Occupation/Employment:** Retired as of November 2017; Aurora Health Care (Health Information) 2015-2017; Divine Savior Lutheran (Business Manager) 2014; Wheaton Franciscan/Aurora Health Care (Medical Transcription) 2005-2013; American Family Insurance (Licensed CSR) 1999-2003

**Vision Statement:** Continue to support and encourage Women in Mission in their walk in service to the Lord. May their hearts be moved to increase mite donations in order to bring more people to hear God's Word through our pastors and missionaries. Keep promoting the LWML to our churches to gain more members of all ages through innovative projects. Romans 12:11 states, "Never be lacking in zeal, but keep your spiritual fervor, serving the Lord."

## Nominee for Jr. Pastoral Counselor \_\_\_\_\_

### Rev. Adam Barkley, Sheboygan



**Ministry:** Luther Memorial Lutheran Church in Sheboygan, WI

**Education:** M.A. Divinity, Concordia Theological Seminary, Ft. Wayne, IN, 2017 B.A. Liberal Arts, Concordia Ann Arbor, 2008

**LWML Experience:** None

**Employment Prior to the Ministry:** Worked in a University Registrar's office before attending seminary.

**Outside Hobbies and/or Community Service/Activity:** Hobbies: Reading, Sporting Clays, and guest preaching at area Lutheran schools. Community Service: Rev. Barkley stated that he is passionate about the pro-life movement and will be working in the future with his congregation to better serve young mothers in Sheboygan.

**Personal:** Married with four children. His wife served as a deaconess for four years. Rev. Barkley stated that he is passionate about teaching and enjoys exploring the Biblical texts and answering the hard questions.

**Value of the LWML:** "The LWML is an organization in the church everyone's heard of, but few understand. This is a great tragedy, for it is this mission organization which provides so much monetary support to overseas and domestic missions. Whenever I walk into a church, I don't have to look far to find those who read their Bible regularly, pray for their pastor, attend Bible Studies, and are always willing to help. For those are often the Church's LWML members. The value of the LWML is that these faithful women go beyond raising money. They continue to be in the Word of God and support their pastor. They understand what it is to be a disciple and what it is to have a robust prayer life. Whenever people ask me about the LWML, I can only respond like Phillip to Nathaniel and say, "Come and see." (Jn. 1:46). For until one actually participates in a zone rally, collects mites, watches those mission dollars grow, and be with other faithful Christian women, you have no idea what the LWML is all about. The LWML is worth more than the mites they raise, for in their service to the Church they have helped spread the Gospel of Jesus Christ to a darkened world. And in spreading this pure Gospel, others believe and have life everlasting in Christ's name."

Proverbs 3: 27, *"Do not withhold good from those who deserve it, when it is in your power to act."*

## Nominee for Jr. Pastoral Counselor\_\_\_\_\_



**Rev. Matthew Gehrke**, Wisconsin Dells

**Ministry:** Trinity Lutheran Church of Wisconsin Dells, WI, since 2014, Concordia Lutheran in Cottage Hills, IL, previously

**Education:** Master of Divinity, Concordia Seminary, May 2006  
Bachelor of Arts, Concordia University Wisconsin, May 2002

**LWML Experience:** Mostly with LWML groups in two congregations

**Employment Prior to the Ministry:** Career Pastor

**Outside Hobbies and/or Community Service/Activity:** Hobbies: Board games and sports;  
Community Service: Kiwanis and previously BOD member of Community Hope Center and Options Now; Coached High School Tennis for Metro East Luth. HS for seven years

**Personal:** Married with two children

**Value of the LWML:** “There is a tremendous value in our church through the LWML. The LWML continues to carry out the Great Commission at the local, district, national, and international levels. The work of the LWML can’t entirely be measured. Sure, they can count their mites collected every year that goes to support the many worthy causes for the sake of the Gospel, but then that wouldn’t include the number of volunteer hours the women of the LWML give at all levels of service. The work of the LWML can be felt by the seminarians who have received support through Scholarships, Mission Grants, and local groups sponsoring a student. The work of the LWML can be heartwarming as another person half way around the world wraps oneself in a quilt made by a local LWML group. It can be tasted in the local bake sales that LWML groups put on to support the ministry of the Gospel. All this is simply the tip of the iceberg of the value that the LWML has in our church body today.”

Romans 10:14-15, *“How, then, can they call on the one they have not believed in? And how can they believe in the one of whom they have not heard? And how can they hear without someone preaching to them? And how can they preach unless they are sent? As it is written, ‘How beautiful are the feet of those who bring good news!’”*

**Candidate's for Office Tally Record \_\_\_\_\_**

<b>Office and Candidate</b>	<b># of votes</b>	<b>Elected</b>
<b>Vice President of Gospel Outreach and Christian Life</b>		
Judy Gitzlaff		
<b>Vice President of Organizational Resources</b>		
Ruth Mueller		
<b>Recording Secretary</b>		
Jan Ladendorf		
<b>Financial Secretary</b>		
Marilyn Belter		
Wendie Staus		
<b>Jr. Pastoral Counselor</b>		
Rev. Adam Barkley		
Rev. Matthew Gehrke		

## **1. I LOVE TO TELL THE STORY**

I love to tell the story  
Of unseen things above,  
Of Jesus and His glory,  
Of Jesus and His love.  
I love to tell the story  
Because I know 'tis true.  
It satisfies my longings  
As nothing else can do.

### **Chorus:**

**I love to tell the story!  
'Twill be my theme in glory  
To tell the old, old story  
Of Jesus and His love.**

I love to tell the story;  
'Tis pleasant to repeat  
What seems each time I tell it  
More wonderfully sweet.

I love to tell the story,  
For some have never heard  
The message of salvation  
From God's own holy word

### **Chorus**

I love to tell the story,  
For those who know it best  
Seem hungering and thirsting  
To hear it like the rest.  
And when in scenes of glory  
I sing the new, new song,  
'Twill be the old, old story  
That I have loved so long.

### **Chorus**

*Public domain*

## **2. HOW BEAUTIFUL**

How beautiful the hands that served  
The wine and the bread and the sons of the  
earth.  
How beautiful the feet that walked  
The long dusty roads and the hill to the cross.

### **Chorus:**

**How beautiful, how beautiful,  
How beautiful is the body of Christ.**

How beautiful the heart that bled,  
That took all my sin and bore it instead.  
How beautiful the tender eyes  
That chose to forgive and never despise.

### **Chorus**

And as He laid down His life,  
We offer this sacrifice  
That we will live just as He died:  
Willing to pay the price, Willing to pay the price.

How beautiful the feet that bring  
The sound of good news and the love of the  
King.

How beautiful the hands that serve  
The wine and the bread and the sons of the  
earth.

### **Chorus**

*Twila Paris, ©1990 Ariose Music;  
Mountain Spring Music  
(Admin. by Capitol CMG Publishing)  
Used with permission, CCLI #1024895*

### **3.SHARING THE CARING CHRIST**

**Chorus:**

**Sharing, caring, sharing the caring Christ,  
Sharing, caring, sharing the caring Christ.**

For God so loved the world  
That He gave His only Son,  
And all who do believe,  
The vict'ry has been won.

**Chorus**

So go therefore and teach  
So that all may hear God's Word.  
Tell everyone you meet  
'Til everyone has heard.

**Chorus**

And all who love the Lord  
Share the blessings He has giv'n,  
And will forever more  
Sing praise to Him in heav'n.

**Chorus 2x**

*Lana Gibbons, ©1989  
Used by permission*

### **4.LUTHERAN WOMEN, ONE AND ALL**

Lutheran Women, one and all,  
We have heard the Gospel call,  
We by faith have seen our Lord  
Crucified and then restored.  
We have seen Him pay the price,  
For our sins a sacrifice.  
Him we Lord and Christ acclaim  
And unite to praise His name.

Lutheran Women, young and old,  
Well we know His challenge bold:  
"Help to take the Gospel light  
To a world in darkest night,  
By example in the home,  
By inviting those who roam,  
By our prayers for sinners lost,  
By our gifts for missions' cost."

Lutheran Women, coast to coast,  
In the Lord a mighty host,  
Let us all united be in the Holy Trinity,  
One in faith, in hope, and love,  
Working for the LORD above,  
'Till, our earthly labors done,  
We in heaven shall all be one.

*Used with permission, LWML*

### **5.TAKE MY LIFE AND LET IT BE**

Take my life and let it be consecrated, Lord, to Thee.

Take my moments and my days; let them flow in endless praise.

Take my hands and let them move at the impulse of Thy love;

Take my feet and let them be swift and beautiful for Thee.

Take my voice and let me sing always, only for my King;

Take my lips and let them be filled with messages from Thee,

Take my silver and my gold, not a mite would I withhold;

Take my intellect and use every power as Thou shalt choose.

Take my will and make it Thine, it shall be no longer mine;

Take my heart, it is Thine own, it shall be Thy royal throne.

Take my love, my Lord, I pour at Thy feet its treasure store;

Take myself, and I will be ever, only, all for Thee.

*Public domain, LSB 783*

*(Stand)*

### **6.WE GIVE THEE BUT THINE OWN**

We give Thee but Thine own,

What e'er the gift may be;

All that we have is Thine alone,

A trust, O Lord, from Thee.

May we Thy bounties thus

As stewards true receive

And gladly, as Thou blessest us,

To Thee our first-fruits give!

*Public domain, LSB 781*

## **7. WITH JOY WE COME TOGETHER**

With joy we come together,  
Our hearts of one accord,  
Rejoicing in the blessings  
Of serving You, O Lord.  
The gifts that You have given  
Make us a mighty throng.  
With thankfulness we raise up  
Our praise to You in song.

We celebrate the women,  
Who've served You through the  
years,  
Sustaining one another  
Through vict'ry, trials, and fears.  
We follow now their service,  
Devoted, Christ, to You.  
No matter what Your errand,  
We'll strive to follow through.

Through ministries supported,  
We've seen Your love outpoured.  
With mites that You've provided,  
We've learned to trust You, Lord.  
Our many hands have served You,  
Yet much is left undone.  
Your mission must continue  
In reaching everyone.

*(Stand for last verse)*

Lord, with Your love and guidance,  
We'll serve You faithfully.  
Wherever You should lead us,  
We'll follow willingly.  
May we be bold in witness  
So others see Your grace.  
That we may one day worship  
Together face to face.

*Jean Hansen Kammerer  
Used with permission, LWML*

## **8. SERVE THE LORD WITH GLADNESS!**

"Serve the LORD with gladness!" It is He alone  
Who redeemed us sinners, Guides us as His  
own  
To enjoy the blessings; Of His love and grace  
Will at last in glory; Meet us face to face.

**Chorus:**

**Onward, then, for Jesus!**

**Let this be our aim:**

**"Serve the LORD with gladness!"**

**Glorify His name!**

"Serve the LORD with gladness!" He gave us  
command  
To proclaim His Gospel; Now in every land!  
So that fellow sinners; May, like us, be blest;  
Leading them to Jesus, We can serve Him best.

**Chorus**

*(Stand for last verse)*

"Serve the LORD with gladness!" There's no  
greater joy  
Than to serve the Master, Work in His employ.  
As we build His kingdom; Angels, too, rejoice  
Over every sinner; Brought to hear His voice.

**Chorus**

*Prof. Ernest Lewerenz*

*Used with permission, LWML*

## **9.HARK THE VOICE OF JESUS CALLING**

Hark, the voice of Jesus calling, "Who will go and work today?  
Fields are white and harvests waiting-- Who will bear the sheaves away?"  
Loud and long the master calleth; Rich reward he offers thee.  
Who will answer, gladly saying, "Here am I, send me, send me"?

If you cannot speak like angels, If you cannot preach like Paul,  
You can tell the love of Jesus, You can say He died for all.  
If you cannot rouse the wicked with the judgment's dread alarms,  
You can lead the little children to the Savior's waiting arms.

If you cannot be a watchman, Standing high on Zion's wall,  
Pointing out the path to heaven, Offering life and peace to all,  
With your prayers and with your bounties you can do what God commands;  
You can be like faithful Aaron, Holding up the prophet's hands.

Let none hear you idly saying, "There is nothing I can do,"  
While the multitudes are dying and the master calls for you.  
Take the task he gives you gladly, Let his work your pleasure be;  
Answer quickly when he calleth, "Here am I, send me, send me!"

*Public domain, LSB 826*

**10.LORD, HELP US WALK YOUR SERVANT WAY**

Lord, help us walk Your servant way  
Wherever love may lead  
And, bending low, forgetting self,  
Each serve the other's need.

You came to earth, O Christ, as Lord  
But, pow'r You laid aside  
You lived Your years in servanthood  
In lowliness You died.

No golden scepter but a towel  
You place within the hands  
Of those who seek to follow You  
And live by Your commands.

You bid us bend our human pride  
Nor count ourselves above  
The lowest place, the meanest task  
That waits the gift of love.

Lord, help us walk Your servant way  
Where love may lead  
And, bending low, forgetting self,  
Each serve the other's need.

*Text by Herman Stuempfle, Jr.  
Used by permission GIA*

**11.I WANT TO WALK AS A CHILD OF THE LIGHT**

I want to walk as a child of the light.  
I want to follow Jesus.  
God set the stars to give light to the world.  
The star of my life is Jesus.

**Chorus:**

In Him there is no darkness at all.  
The night and the day are both alike.  
The Lamb is the light of the city of God.  
Shine in my heart, Lord Jesus.

I want to see the brightness of God.  
I want to look at Jesus.  
Clear Sun of Righteous, shine on my path,  
And show me the way to the Father.

**Chorus**

I'm looking for the coming of Christ.  
I want to be with Jesus.  
When we have run with patience the race,  
We shall know the joy of Jesus.

**Chorus**

*Kathleen Thomerson, ©1970, 1975 Celebration  
Used with permission, CCLI #1024895*

## **Lutheran Women's Missionary League (Lutheran Women in Mission)**

An auxiliary of The Lutheran Church-Missouri Synod (LCMS)

### **The League Pledge**

In fervent gratitude for the Savior's dying love and His blood-bought gift of redemption we dedicate ourselves to Him with all that we are and have; and in obedience to His call for workers in the harvest fields, we pledge Him our willing service wherever and whenever He has need of us. We consecrate to our Savior our hands to work for Him, our feet to go on His errands, our voice to sing His praises, our lips to proclaim His redeeming love, our silver and our gold to extend His Kingdom, our will to do His will, and every power of our life to the great task of bringing the lost and the erring into eternal fellowship with Him. Amen.

### **Purpose Statement**

The purpose of the LWML-South Wisconsin District is to assist each woman in the congregations of our district in affirming her relationship with the Triune God so that she is enabled to use her Spirit-endowed gifts in reaching out with Christ's love to all the people of her church, neighborhood, and the world.

### **Objectives of LWML-South Wisconsin District**

The objective of this organization shall be to develop and maintain a greater mission consciousness among the women of LWML-SWD through mission education, mission inspiration, and mission service; and to gather funds for the support of mission grants.

(Bylaws, Article II)

### **The Mite Box**

Based on the Biblical story of the widow's mite in Luke 21, Mite Box contributions support mission work here and abroad. Over \$100 million dollars have been raised since 1942. Each donation is accompanied by a prayer that God would use the mites to His glory.



For more information, please visit:

[www.lwml.org](http://www.lwml.org)

[www.lwml-swd.org](http://www.lwml-swd.org)

Facebook at LWML-South Wisconsin